

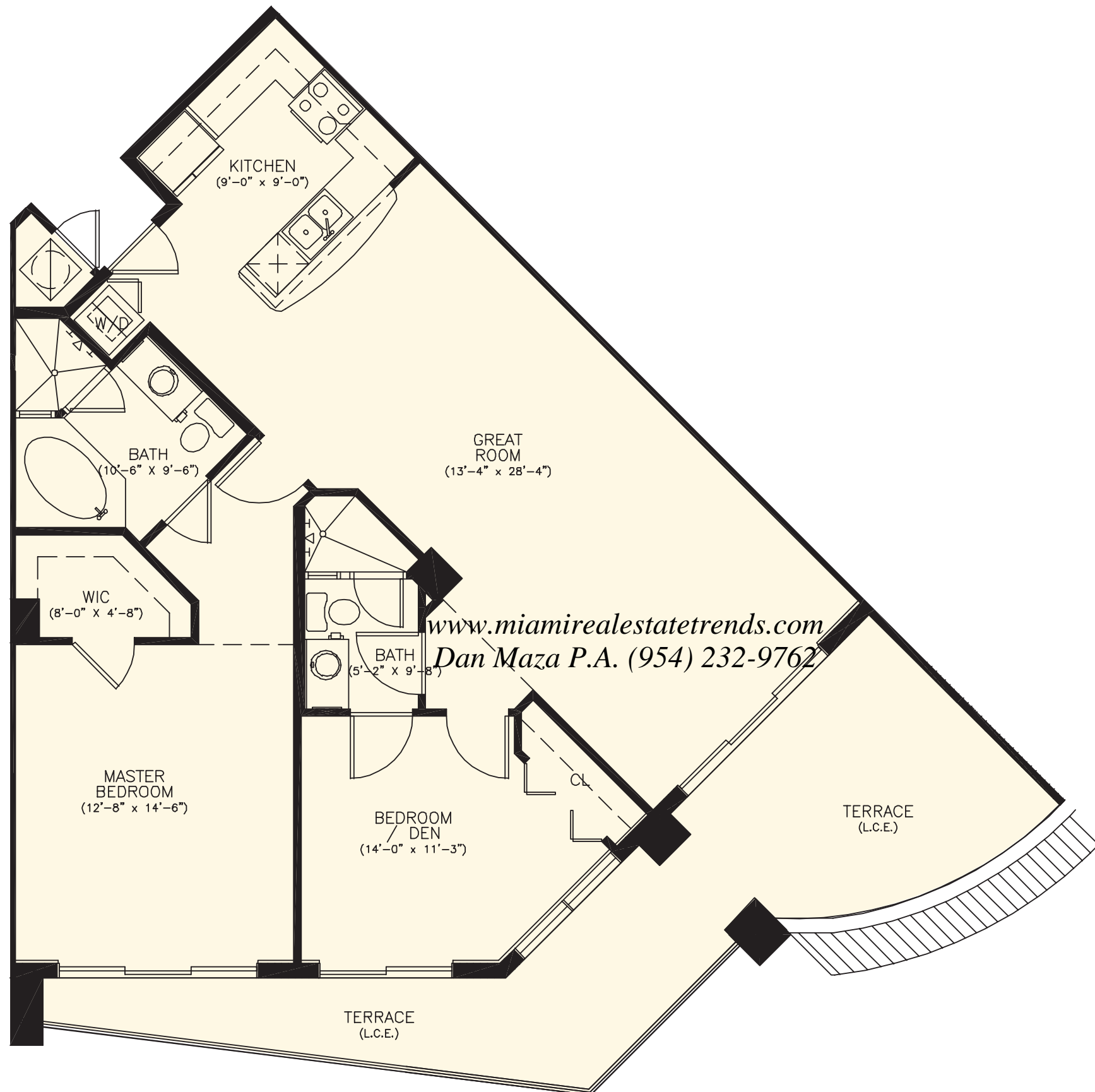
# TOWER RESIDENCES

.....What's Your Life "style"? .....

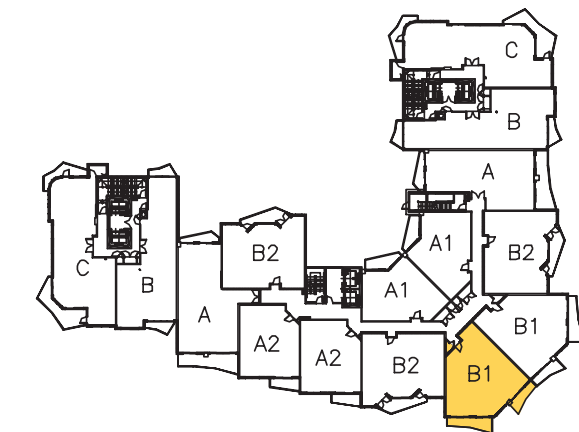
## UNIT B1

**Bedrooms:** 2  
**Baths:** 2  
**Floors plans:** 6<sup>th</sup>

**Interior area:** 1,143 sq.ft. 106 m2  
**Balcony area:** 288 sq.ft. 27 m2  
**Total Area:** 1,431 sq.ft. 133 m2



[www.miamirealestatetrends.com](http://www.miamirealestatetrends.com)  
 Dan Maza P.A. (954) 232-9762

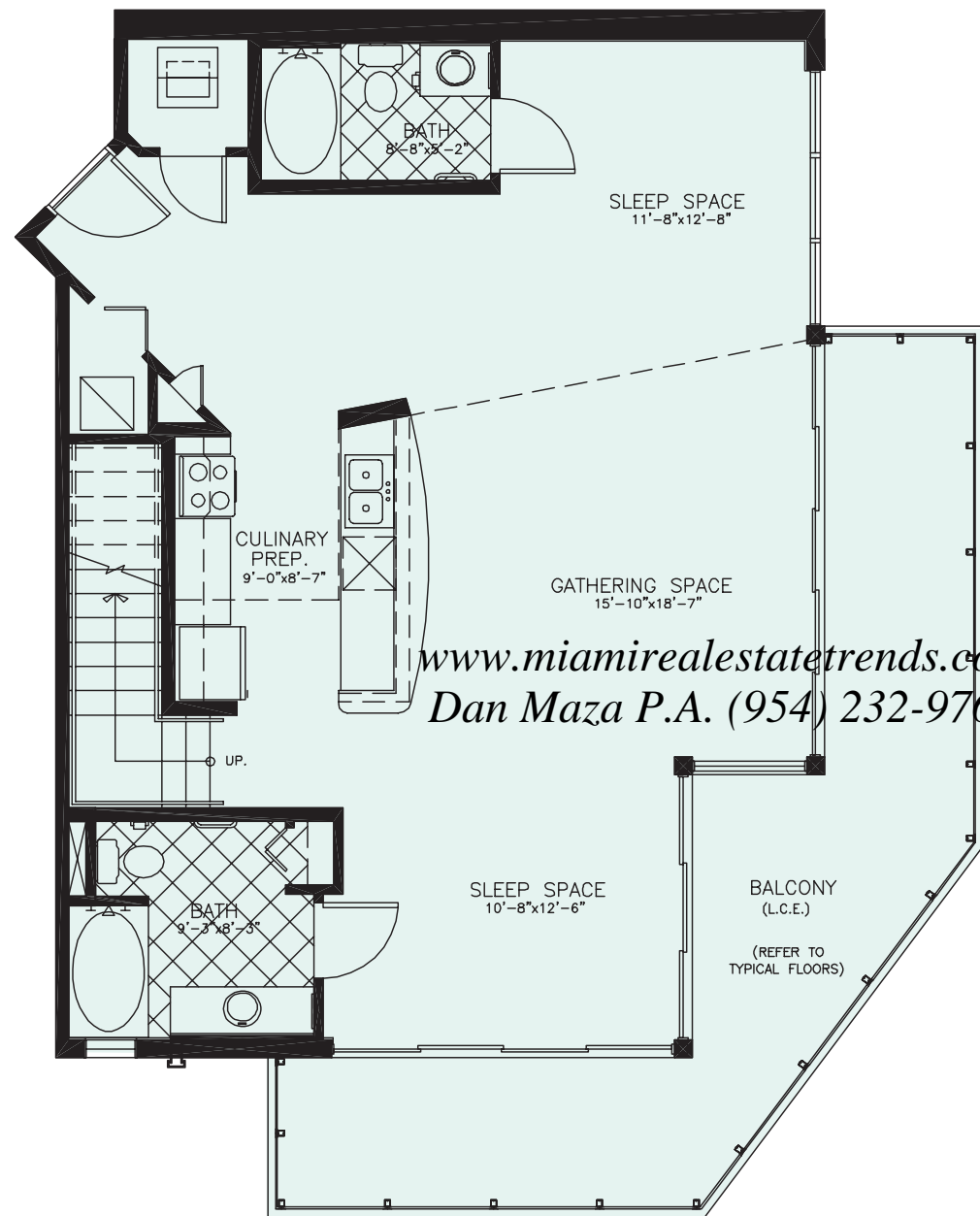


All dimensions are approximate and all floor plans and building plans are subject to change by the developer without notice. Stated areas are measured to the exterior boundaries of the exterior walls and the centerline of the interior demising walls and in fact vary from the areas that would be determined by using the description and definition of the 'Unit' set forth in the declaration (which generally only includes the interior airspace between the perimeter walls and excludes interior structural components).

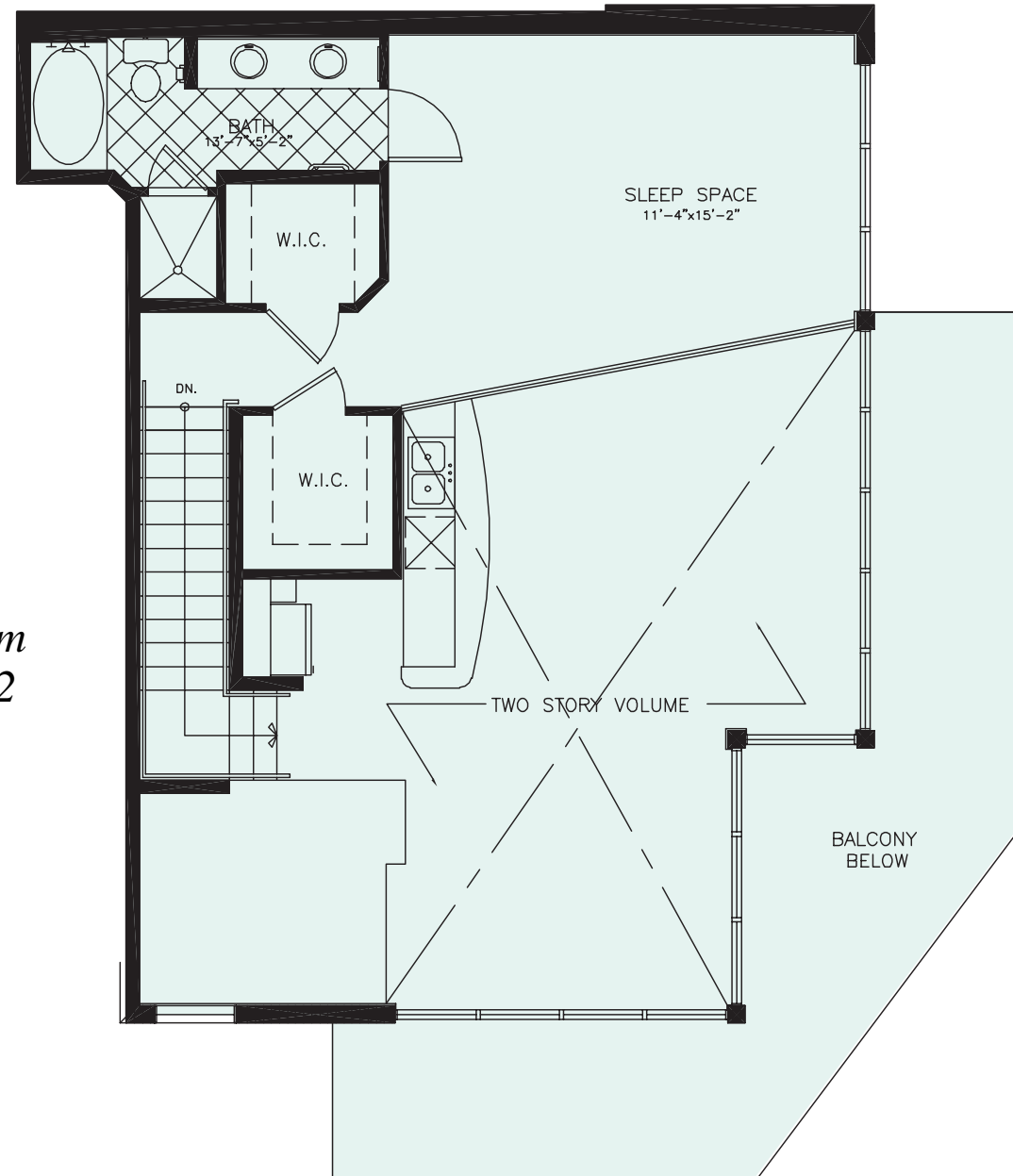
# LOFTS

.....What's Your Life "style"? .....

## UNIT D

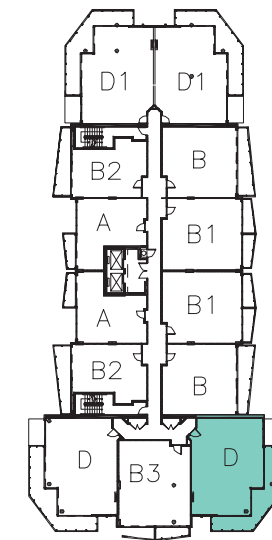


LOWER LEVEL



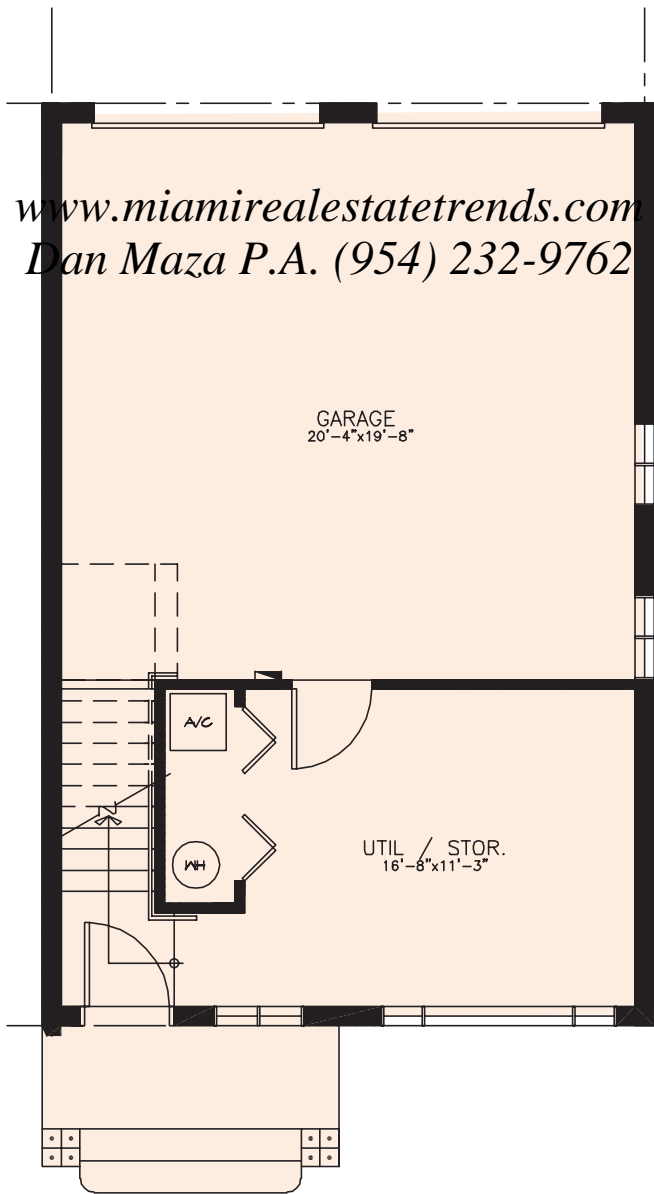
UPPER LEVEL

<b>Baths:</b>	2
<b>Floors plans:</b>	3 <sup>rd</sup> to 13 <sup>th</sup>
Lower Level	
<b>Interior area:</b>	1,068 sq.ft. 326 m <sup>2</sup>
<b>Balcony area:</b>	307 sq.ft. 93 m <sup>2</sup>
Upper Level	
<b>Interior area:</b>	479 sq.ft. 146 m <sup>2</sup>
<b>Balcony area:</b>	0 sq.ft. 326 m <sup>2</sup>
<b>Total Area:</b>	1,854 sq.ft. 565 m <sup>2</sup>

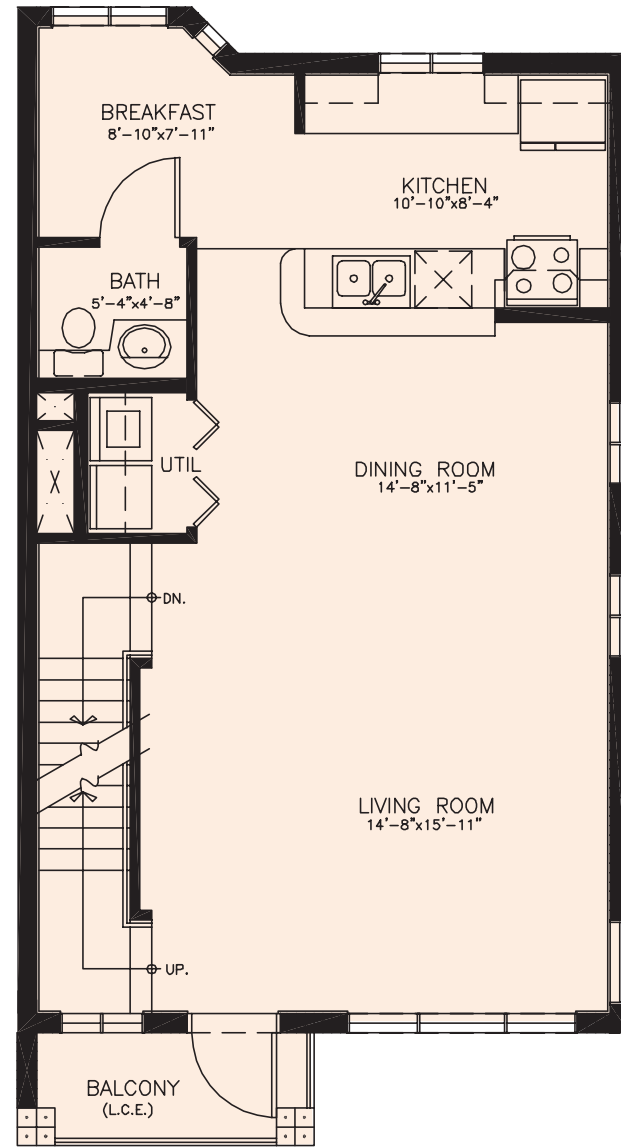


All dimensions are approximate and all floor plans and building plans are subject to change by the developer without notice. Stated areas are measured to the exterior boundaries of the exterior walls and the centerline of the interior demising walls and in fact vary from the areas that would be determined by using the description and definition of the 'Unit' set forth in the declaration (which generally only includes the interior airspace between the perimeter walls and excludes interior structural components).

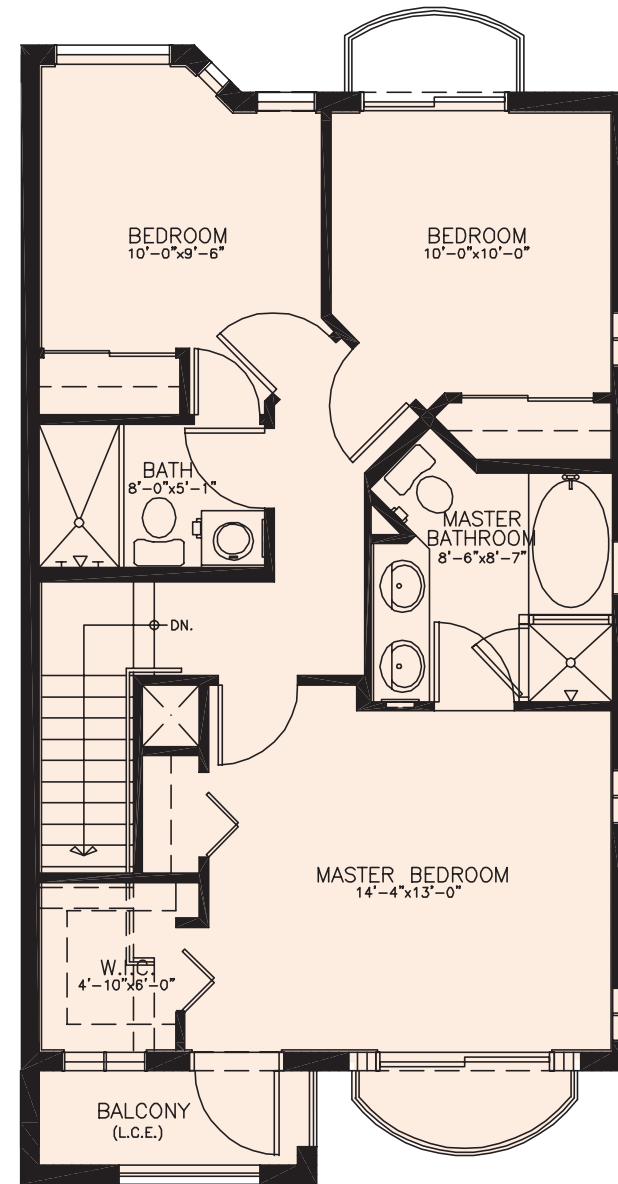
www.miamirealestatetrends.com  
 Dan Maza P.A. (954) 232-9762



FIRST LEVEL



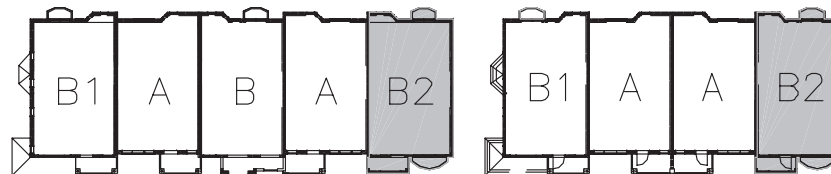
SECOND LEVEL



THIRD LEVEL

## UNIT B2

<b>Baths:</b>	2
<b>Floors plans:</b>	3 <sup>rd</sup> to 13 <sup>th</sup>
Lower Level	
<b>Interior area:</b>	1,068 sq.ft. 326 m <sup>2</sup>
<b>Balcony area:</b>	307 sq.ft. 93 m <sup>2</sup>
Lower Level	
<b>Interior area:</b>	479 sq.ft. 146 m <sup>2</sup>
<b>Balcony area:</b>	0 sq.ft. 326 m <sup>2</sup>
<b>Total Area:</b>	1,854 sq.ft. 565 m <sup>2</sup>



All dimensions are approximate and all floor plans and building plans are subject to change by the developer without notice. Stated areas are measured to the exterior boundaries of the exterior walls and the centerline of the interior demising walls and in fact vary from the areas that would be determined by using the description and definition of the "Unit" set forth in the declaration (which generally only includes the interior airspace between the perimeter walls and excludes interior structural components).