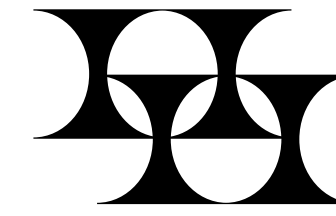
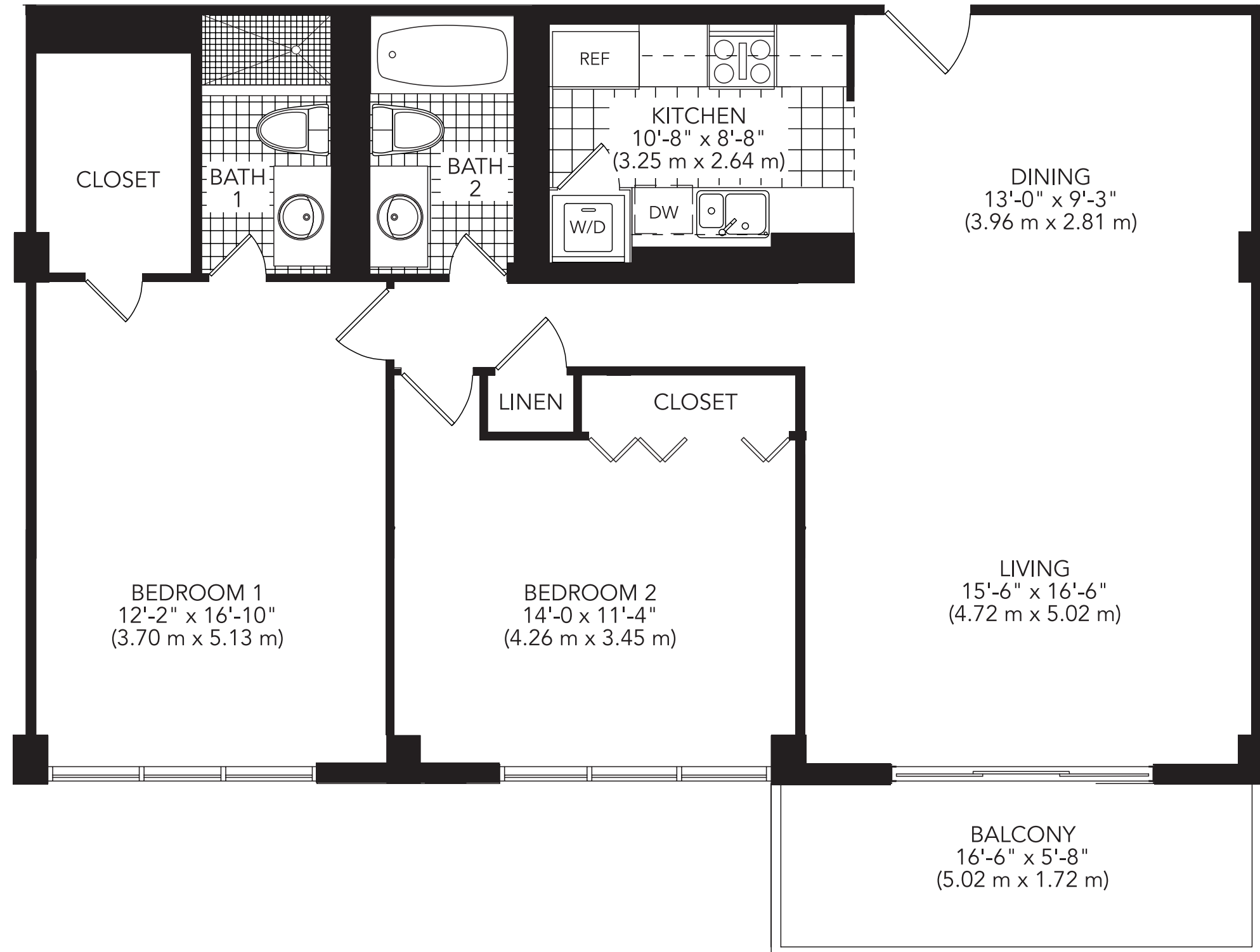
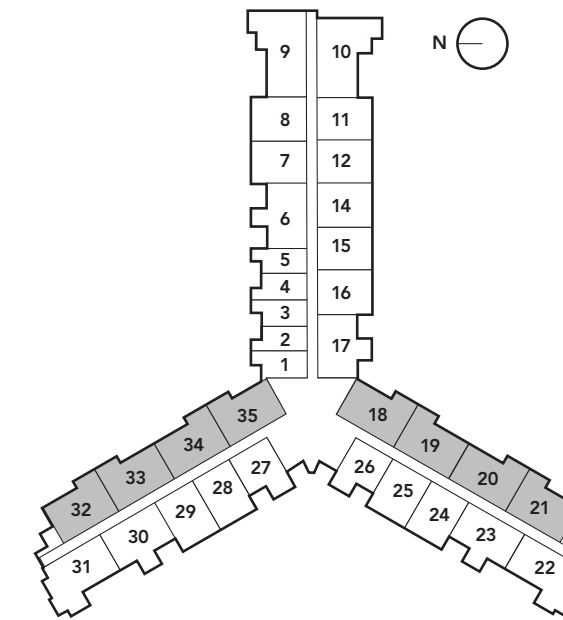


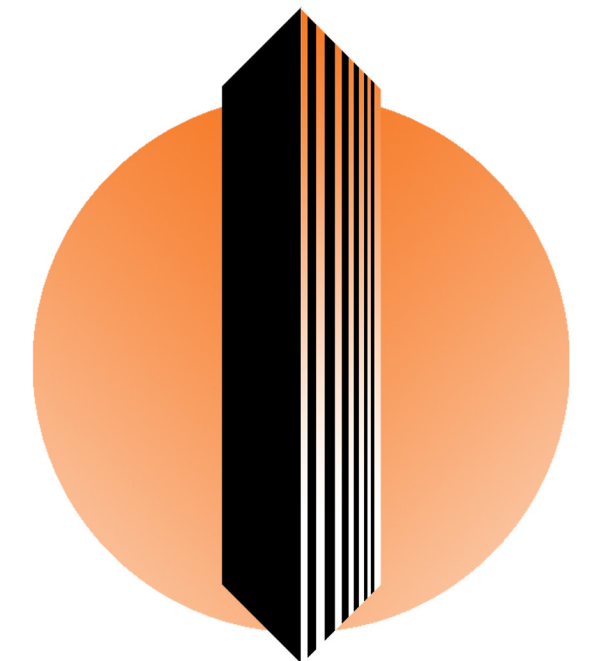
To purchase a unit at the Harbour House, call (305) 433-2818



THE NEW
HARBOUR HOUSE
BAL HARBOUR



KEY PLAN
Lines 19, 21, 33 & 35
18, 20, 32, 34 (Rev)



MiamiRealEstateTrends.Com

B

2 bedroom - 2 bath

unit 1,153 s.f.
balcony 208 s.f.

total 1,361 s.f.