



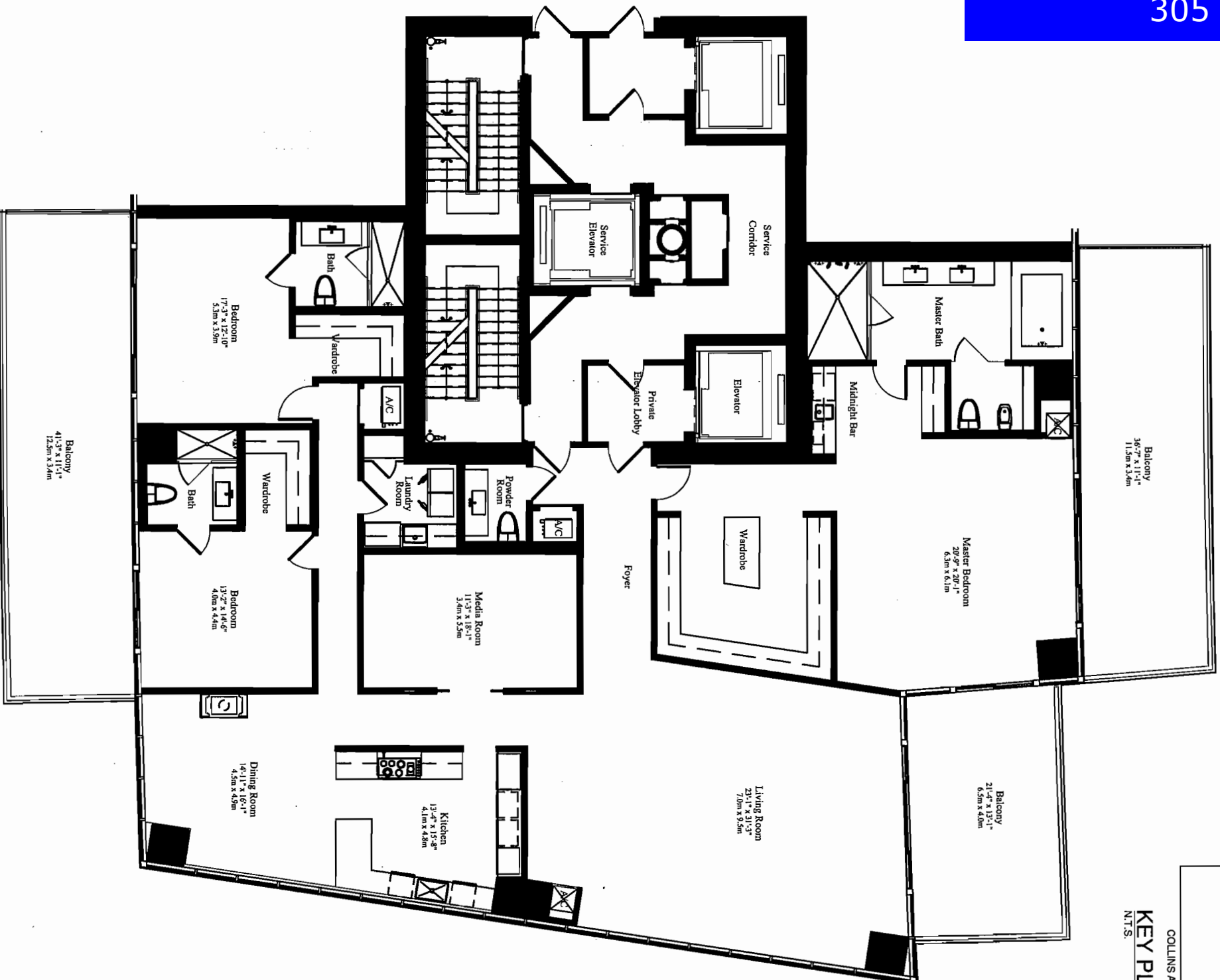
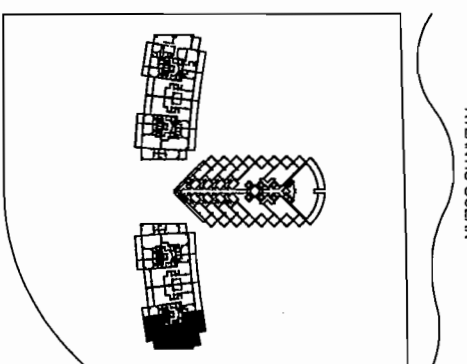
SOUTH

TOWER

RESIDENCES



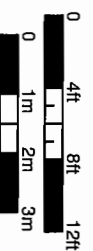
ST. REGIS
Hotels & Resorts



SOUTH TOWER
UNIT 'A'

3 BEDROOMS, MEDIA ROOM AND 3 1/2 BATHS

A/C	3,884 SQ FT	360.8 M ²
BALCONY	1,132 SQ FT	105.2 M ²
TOTAL	5,016 SQ FT	466.0 M²



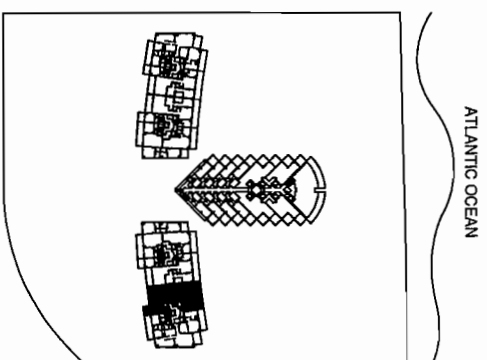
The Sieger Suarez Architectural Partnership

3995 Southeast 70th Street, South Miami, Florida, 33143, 305/274-3702.
 Cesar E. Terry, AIA
 Joe J. Sanchez, AIA

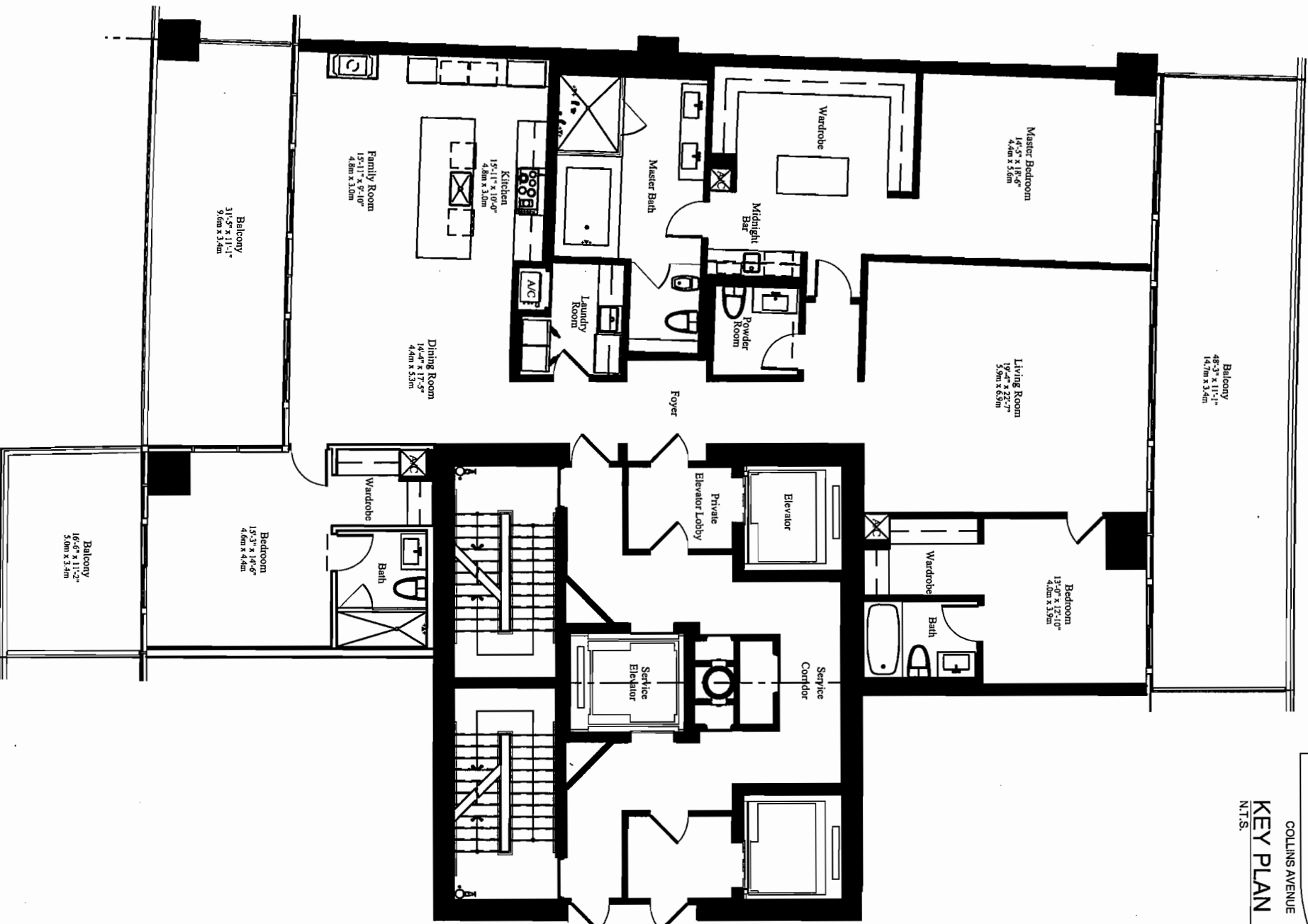
Stated dimensions are measured to the exterior boundaries of the exterior demising walls between units, and the outer boundary of interior demising walls adjacent to common elements, and in fact vary from the dimensions that would be determined by using the description and definition of the "Unit" set forth in the Declaration, (which generally only includes the interior airspace between the perimeter walls and excludes interior structural components). All dimensions are approximate, and all floor plans and development plans are subject to change.



ST. REGIS
Hotels & Resorts

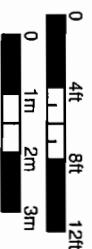


KEY PLAN
N.T.S.
NORTH



SOUTH TOWER (Levels 04-11)
UNIT 'B' MOD
3 BEDROOMS AND 3 1/2 BATHS

A/C	3,070 SQ FT	285.2 M ²
BALCONY	1,071 SQ FT	99.5 M ²
TOTAL	4,141 SQ FT	384.7 M²



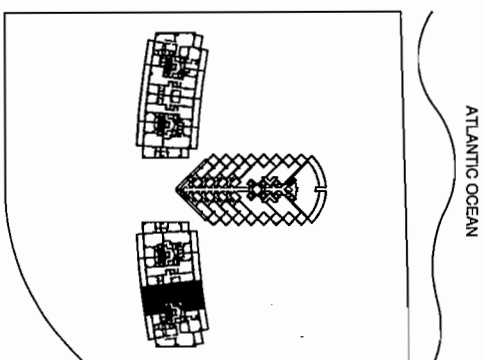
The Sieger Suarez Architectural Partnership

5996 Southway 70th Street, South Miami, Florida, 33143, 305/274-2702
Cesar A. Sieger, AIA
Cesar J. Suarez, AIA

Stated dimensions are measured to the exterior boundaries of the exterior demarcating walls between units, and the outer boundary of interior demarcating walls adjacent to common elements, and in fact vary from the dimensions that would be determined by using the description and definition of the "Unit" set forth in the Declaration (which generally only includes the interior demarcating walls and exclude interior structural components). All dimensions are approximate, and all floor plans and development plans are subject to change.



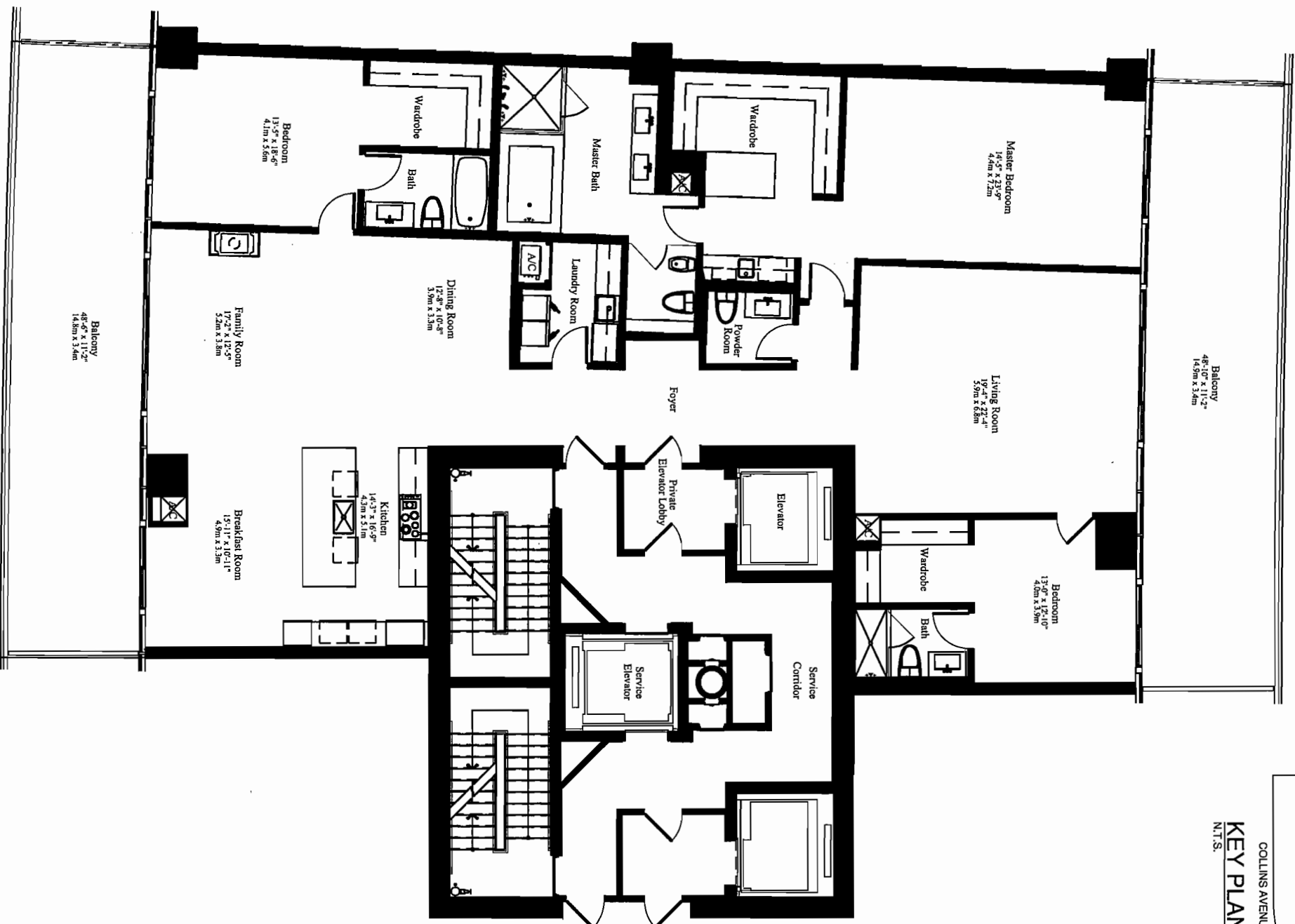
ST. REGIS
Hotels & Resorts



ATLANTIC OCEAN

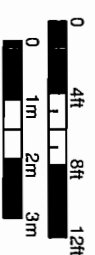
COLLINS AVENUE

KEY PLAN
N.T.S. NORTH



SOUTH TOWER (Levels 12-26)
UNIT 'B'
3 BEDROOMS AND 3 1/2 BATHS

A/C	3,459 SQ FT	321.4 M ²
BALCONY	1,071 SQ FT	99.5 M ²
TOTAL	4,530 SQ FT	420.9 M²



The Sieger Suarez Architectural Partnership

5994 Southwestern 7th Street, South Miami, Florida, 33143, 305/274-2702

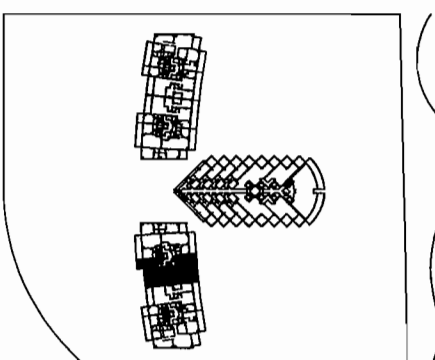
Carlos E. Sieger, P.A.

Diego J. Suarez, P.A.

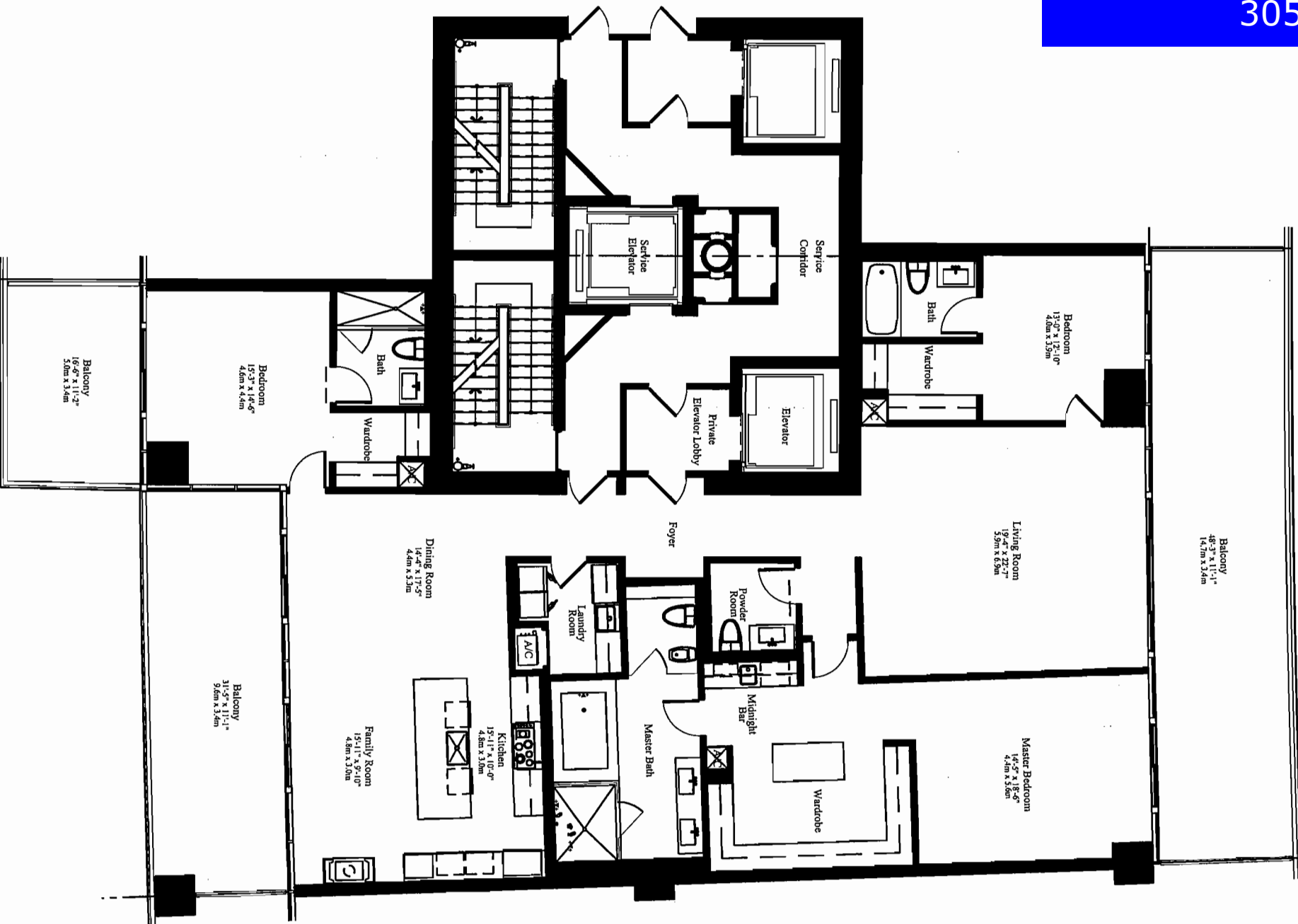
Stated dimensions are measured to the exterior boundaries of the exterior walls between units, and the outer boundary of interior demarcating walls adjacent to common elements, and in fact vary from the dimensions that would be determined by using the description and definition of the "Unit" set forth in the Declaration (which generally only includes the interior demarcating walls and excludes interior structural components). All dimensions are approximate, and all floor plans and development plans are subject to change.



ST. REGIS
Hotels & Resorts

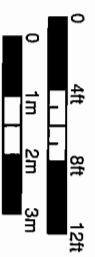


COLLINS AVENUE
KEY PLAN
N.T.S. NORTH



SOUTH TOWER (Levels 04-11)
UNIT 'C' MOD
3 BEDROOMS AND 3 1/2 BATHS

A/C	3,070 SQ FT	285.2 M ²
BALCONY	1,071 SQ FT	99.5 M ²
TOTAL	4,141 SQ FT	384.7 M²



The Sieger Suarez Architectural Partnership

599 Southeast 7th Street, South Miami, Florida, 33143, 305/274-2702

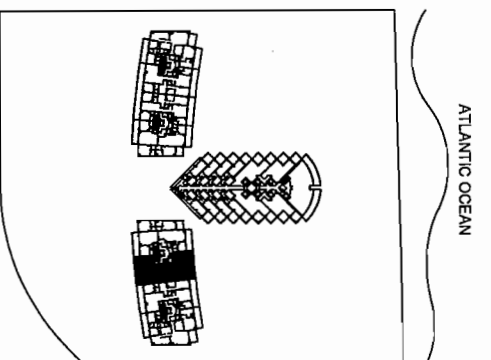
Circle 10 on Reader Service

© 2007 Sieger Suarez, AIA

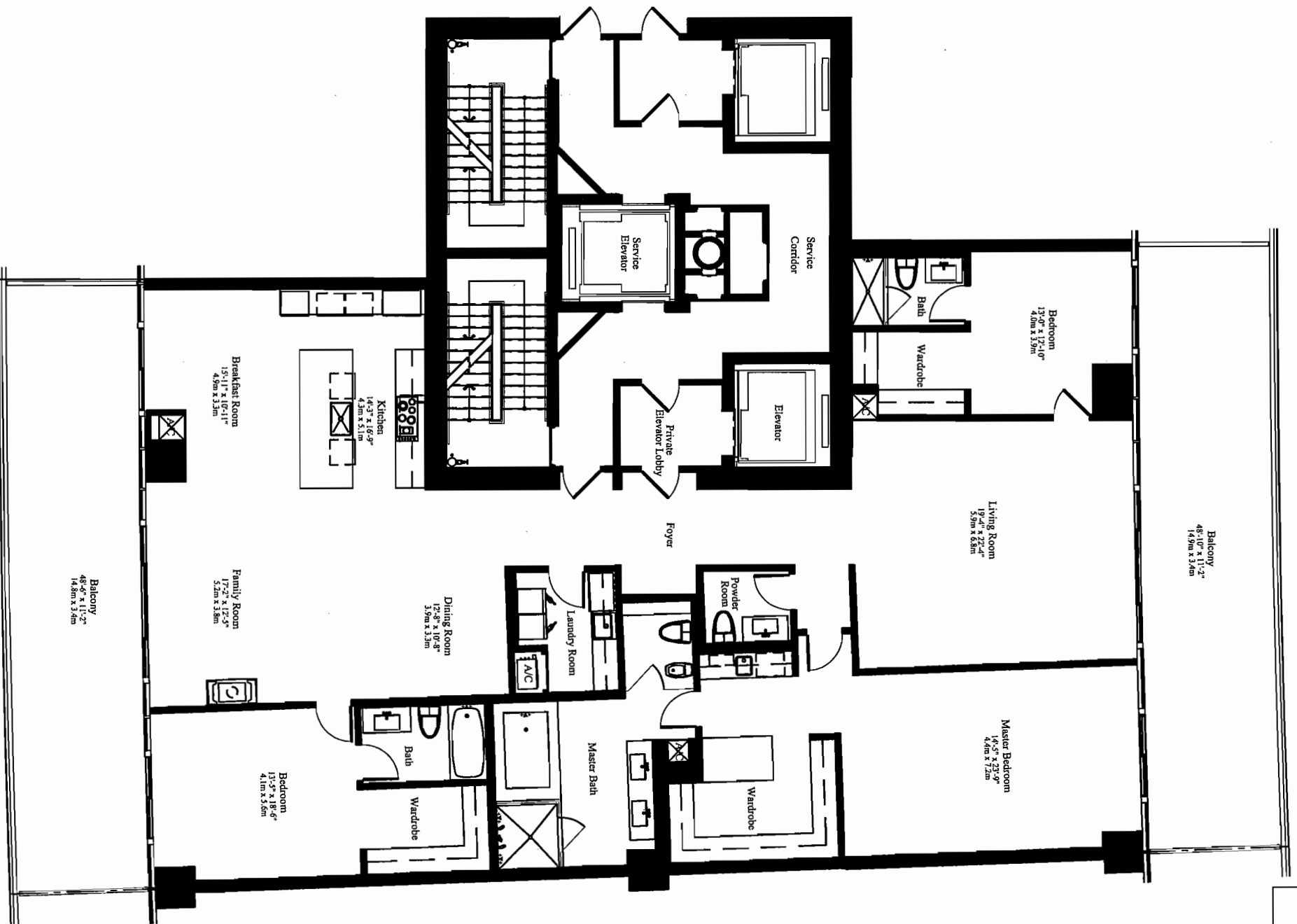
Stated dimensions are measured to the exterior boundaries of the exterior walls, the centerline of interior demising walls between units, and the outer boundary of interior demising walls adjacent to common elements, and in fact vary from the dimensions that would be determined by using the description and definition of the "Unit" set forth in the Declaration (which generally only includes the interior airspace between the perimeter walls and excludes interior structural components). All dimensions are approximate, and all floor plans and development plans are subject to change.



ST. REGIS
Hotels & Resorts

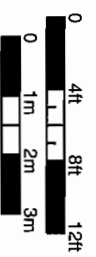


COLLINS AVENUE
KEY PLAN
N.T.S.
NORTH



SOUTH TOWER (Levels 12-26)
UNIT 'C'
3 BEDROOMS AND 3 1/2 BATHS

A/C	3,459 SQ FT	321.4 M ²
BALCONY	1,071 SQ FT	99.5 M ²
TOTAL	4,530 SQ FT	420.9 M²



The Sieger Suarez Architectural Partnership

3509 Southeast 70th Street, South Miami, Florida, 33153, 305/274-2702

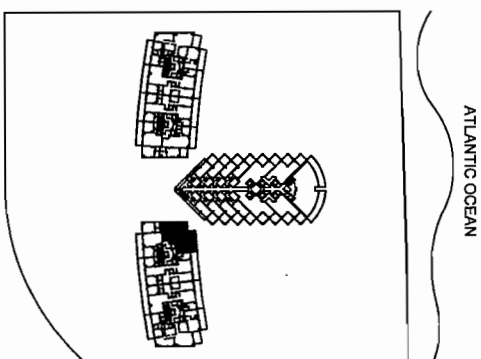
Circle 8 on Reader Service

See Page 104

Stated dimensions are measured to the exterior boundaries of the exterior walls, the centerline of interior demising walls between units, and the outer boundary of interior demising walls adjacent to common elements, and may vary from the dimensions that would be determined by using the description and definition of the "Unit" set forth in the Declaration (which generally only applies to the interior walls and interior structural components). All dimensions are approximate, and all floor plans and development plans are subject to change.



ST. REGIS
Hotels & Resorts

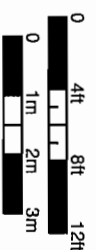


ATLANTIC OCEAN
COLLINS AVENUE
KEY PLAN
N.T.S.
NORTH



SOUTH TOWER
UNIT 'D'
2 BEDROOMS AND 2 1/2 BATHS

A/C	1,911 SQ FT	177.5 M ²
BALCONY	594 SQ FT	55.2 M ²
TOTAL	2,505 SQ FT	232.7 M²



The Sieger Suarez Architectural Partnership

5999 Southwestern 70th Street, South Miami, Florida 33143 305/274-2702

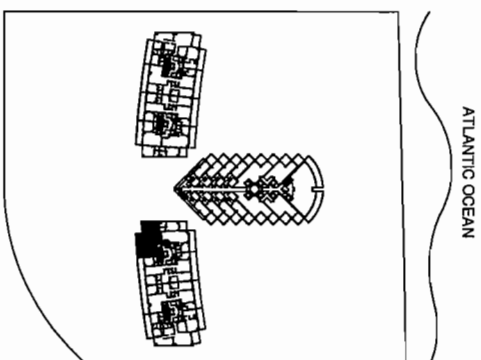
Circle 11, Page 124/125

Page 1, Section 11.1

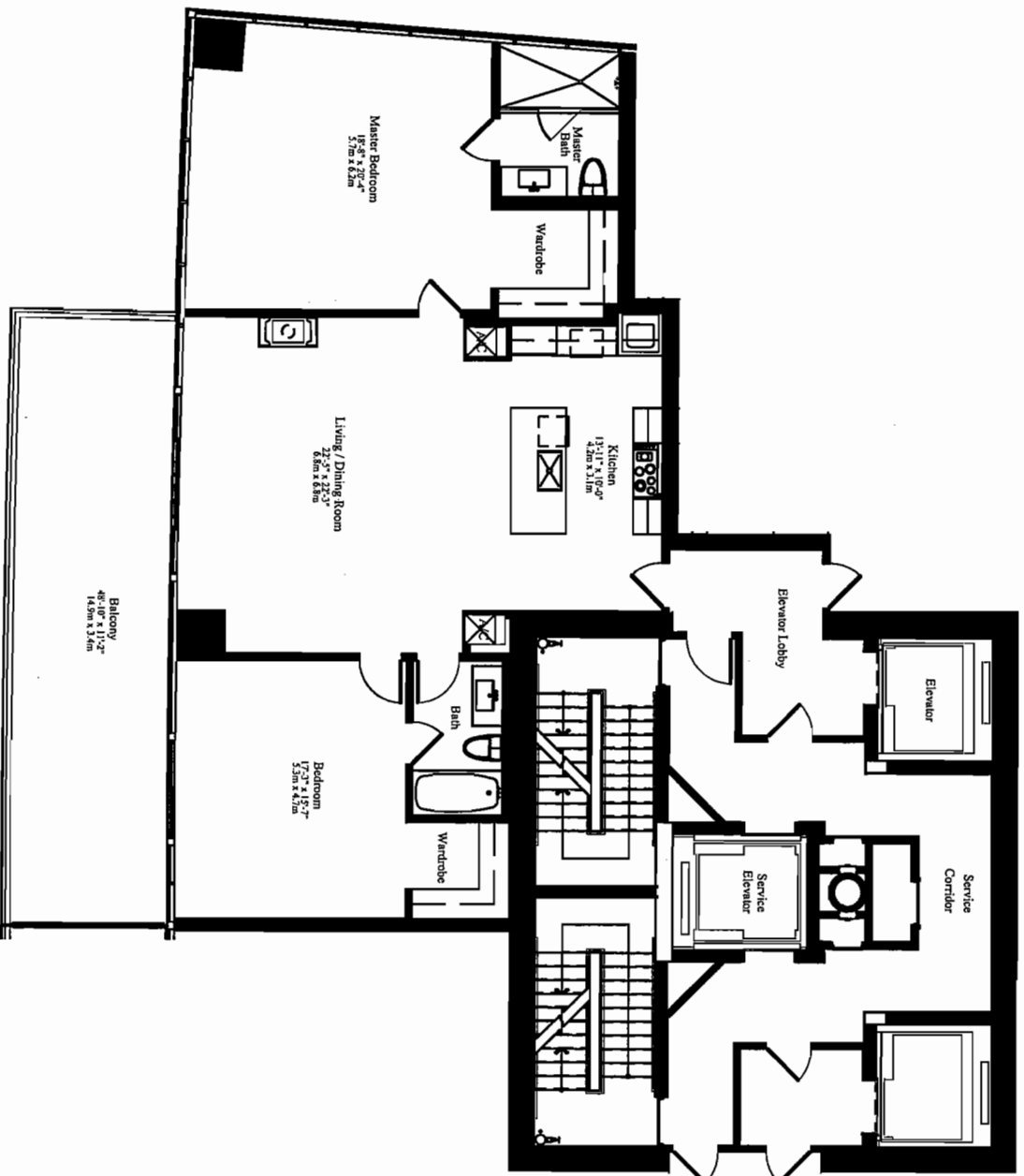
Stated dimensions are measured to the exterior boundaries of the exterior walls, the centerline of interior demising walls between units, and the outer boundary of interior demising walls adjacent to common elements, and in fact vary from the dimensions that would be determined by using the description and definition of the "Unit" set forth in the Declaration (which generally only includes the interior airspace between the perimeter walls and excludes interior structural components). All dimensions are approximate, and all floor plans and development plans are subject to change.



ST. REGIS
Hotels & Resorts

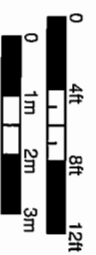


COLLINS AVENUE
KEY PLAN
N.T.S.
NORTH



SOUTH TOWER
UNIT 'E'
2 BEDROOMS AND 2 BATHS

A/C	1,777 SQ FT	165.1 M ²
BALCONY	455 SQ FT	42.3 M ²
TOTAL	2,232 SQ FT	207.4 M²



The Sieger Suarez Architectural Partnership

5900 Southwold 70th Street, South Miami, Florida, 33143, 305/274-2702
© 2014 Sieger Suarez, LLC

Standard dimensions are measured to the exterior boundaries of the exterior walls, the centerline of interior demarcating walls between units, and the outer boundary of interior demarcating walls adjacent to common elements, and in fact vary from the dimensions that would be determined by using the description and definition of the "Unit" set forth in the Declaration (which generally only includes the interior airspace between the perimeter walls and excludes interior structural components). All dimensions are approximate, and all floor plans and development plans are subject to change.