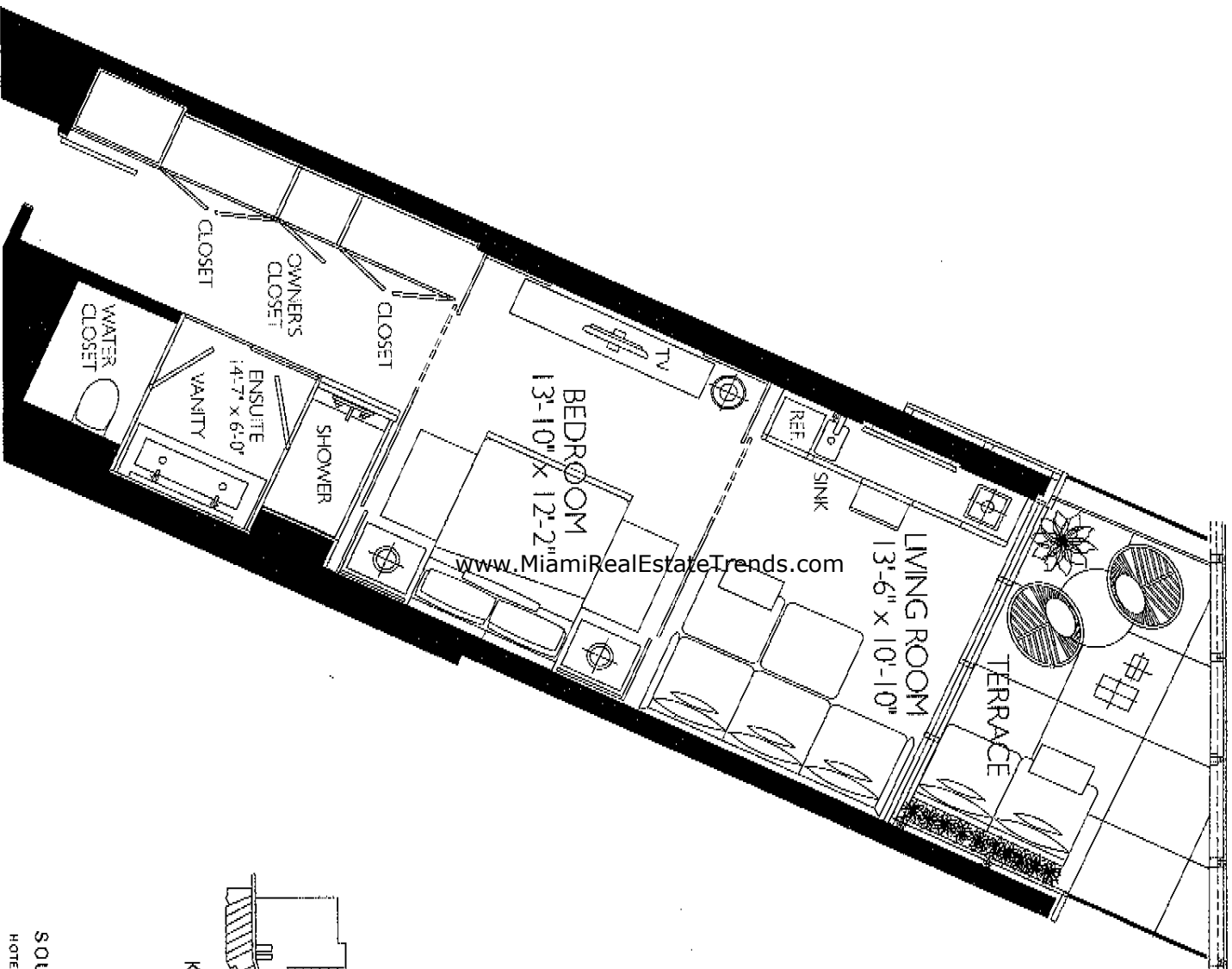
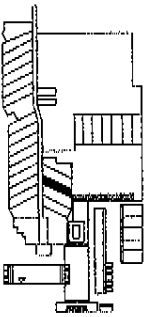


OCEAN SUITE F (Extended Balcony)

INTERIOR	574 sq. ft.	53.3 m ²
EXTERIOR	156 sq. ft.	14.5 m ²
TOTAL	730 sq. ft.	67.8 m ²



www.MiamiRealEstateTrends.com

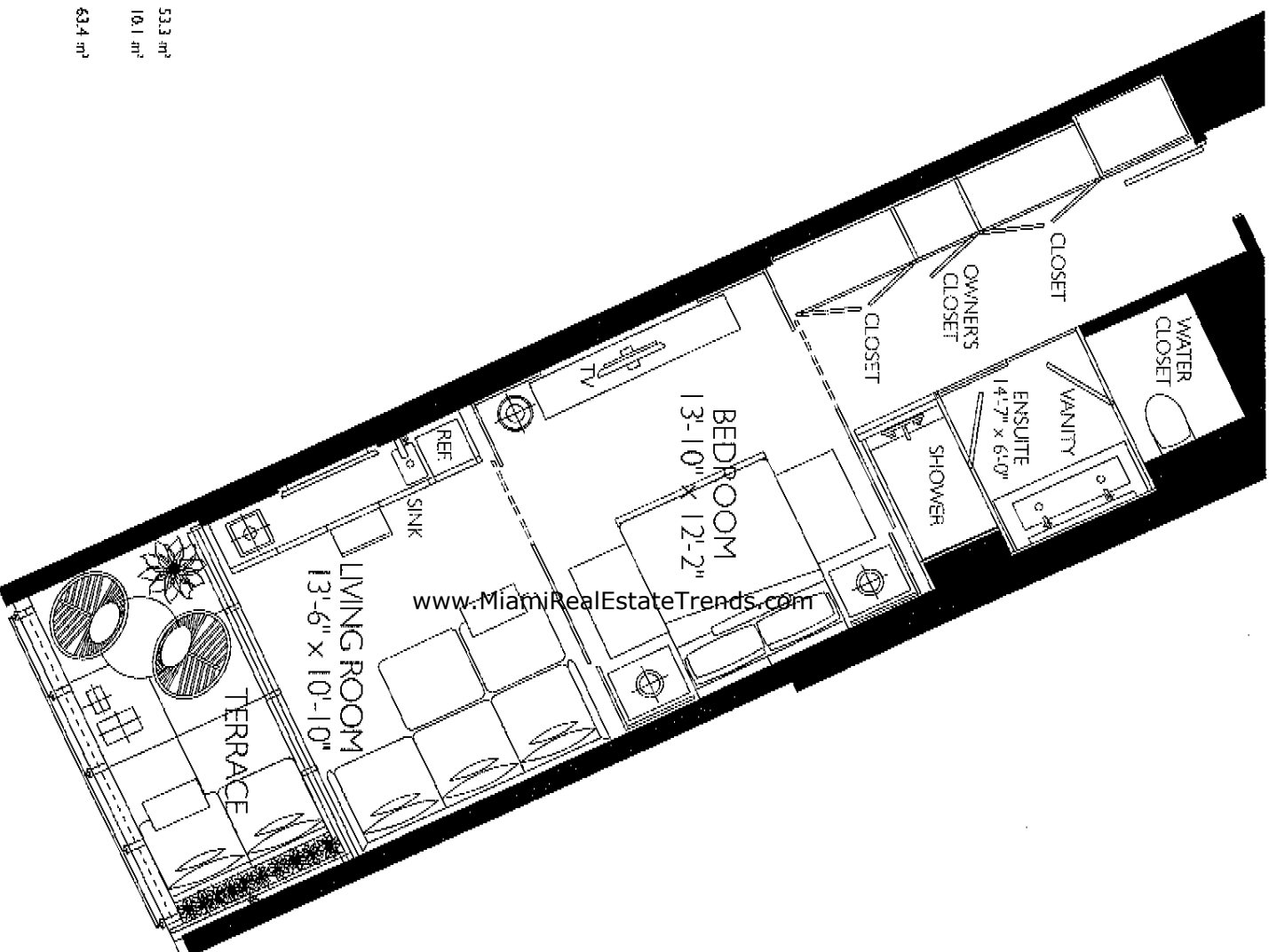


KEYPLAN



SOUTH BEACH
HOTEL & RESIDENCES

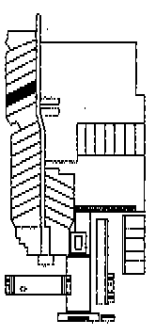
Dimensions are measured to the exterior walls and the perimeter of floor decking and are in feet and inches. The area of the unit would be determined by using the description and addition of the unit's area to the area of the building. Accuracy of the area of the unit is not guaranteed. All dimensions are approximate and all floor plans are developed from the latest floor plan. All dimensions are approximate and all floor plans are developed from the latest floor plan. All dimensions are approximate and all floor plans are developed from the latest floor plan. All dimensions are approximate and all floor plans are developed from the latest floor plan.



OCEAN SUITE F

INTERIOR	574 sq. ft.	53.3 m ²
EXTERIOR	109 sq. ft.	10.1 m ²
TOTAL	683 sq. ft.	63.4 m²

www.MiamiRealEstateTrends.com

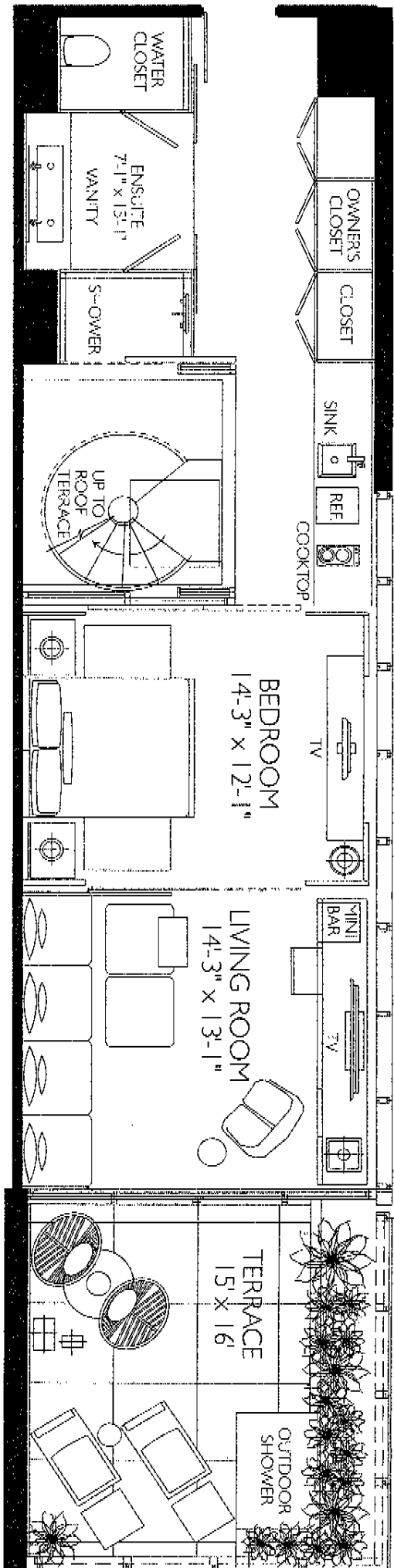


KEYPLAN

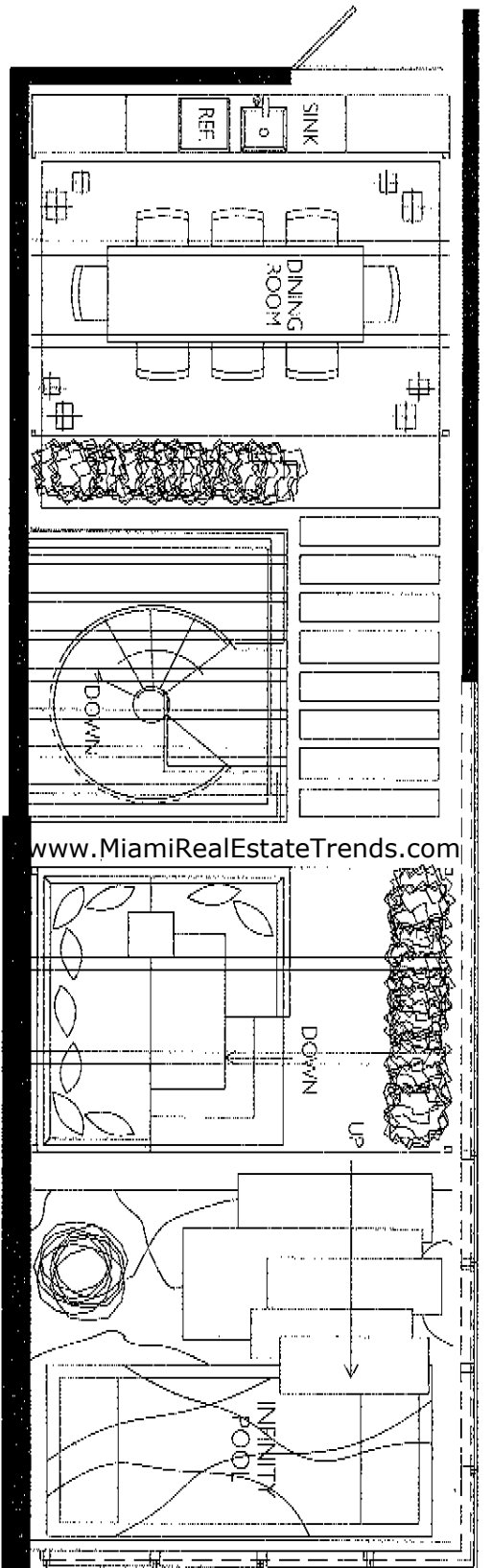
W

SOUTH BEACH
HOTEL & RESIDENCES

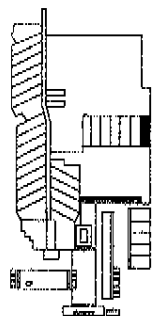
and dimensions are provided for the exterior walls and the perimeter of the building, which may vary from the dimensions that would be determined by using the floor or the definition of the "foot" and by the Department of Public Works and Utilities, Miami-Dade County, Florida. All dimensions are approximate and all floor plans are subject to change. Each set of floor plans are generally valid at the general points of sale given herein. All floor plans are subject to change without notice. All dimensions are approximate and all floor plans are subject to change.



LOWER LEVEL



UPPER LEVEL (ROOF TERRACE)



KEYPLAN

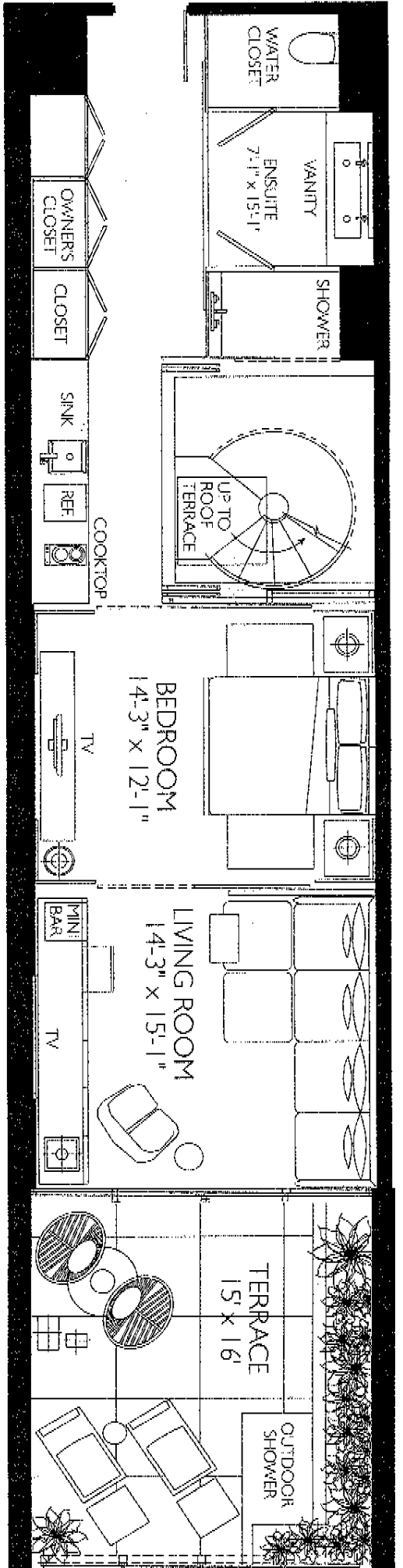
OCEAN SUITE B4

INTERIOR	824 sq. ft.	76.5 m ²
EXTERIOR	252 sq. ft.	23.4 m ²
ROOF TERRACE	824 sq. ft.	76.5 m ²
TOTAL	1,900 sq. ft.	176.4 m ²

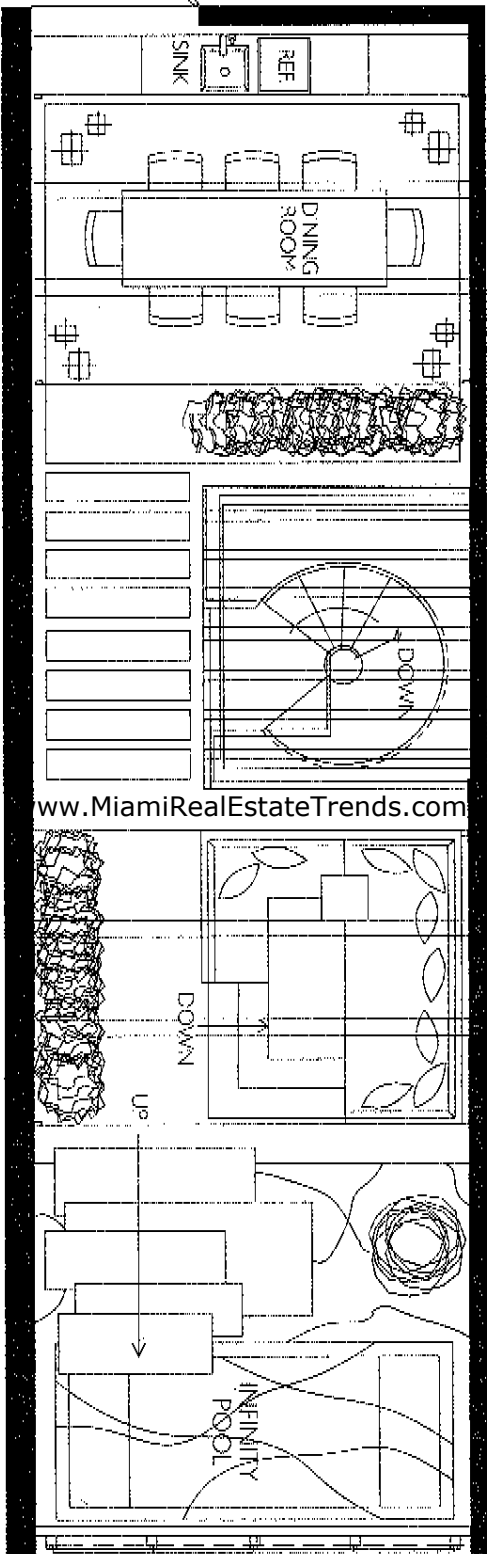


SOUTH BEACH
HOTEL & RESIDENCES

As the drawings are prepared to the extent of the information available, the drawings are not to be construed as a contract. The drawings are not to be used for any other purpose without the express written consent of the architect. The architect is not responsible for any errors or omissions in the drawings. The architect is not responsible for any construction or other work not shown on the drawings. The architect is not responsible for any construction or other work not shown on the drawings. The architect is not responsible for any construction or other work not shown on the drawings.



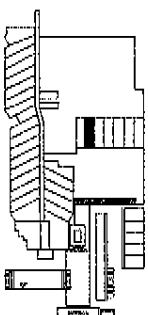
LOWER LEVEL



UPPER LEVEL (ROOF TERRACE)

OCEAN SUITE B2

INTERIOR	793 sq. ft.	73.7 m ²
EXTERIOR	244 sq. ft.	22.7 m ²
ROOF TERRACE	793 sq. ft.	73.7 m ²
TOTAL	1,830 sq. ft.	170.1 m²

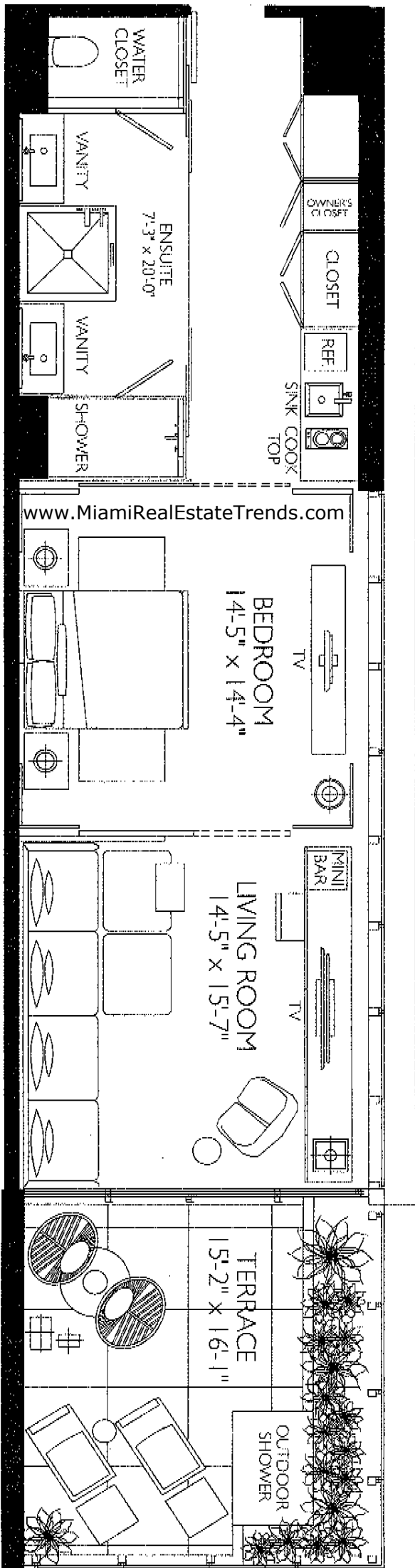


KEY PLAN



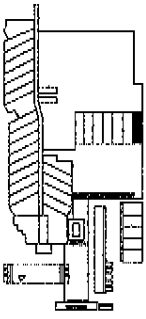
SOUTH BEACH
HOTEL & RESIDENCES

Architect's drawings are for informational purposes only. The architect does not warrant the accuracy of the information provided. The architect is not responsible for any errors or omissions in the drawings. The architect is not responsible for any construction or other matters not shown on the drawings. The architect is not responsible for any construction or other matters not shown on the drawings. The architect is not responsible for any construction or other matters not shown on the drawings.



OCEAN SUITE B3

INTERIOR	824 sq. ft.	76.5 m ²
EXTERIOR	252 sq. ft.	23.4 m ²
TOTAL	1,076 sq. ft.	99.9 m ²



KEYPLAN



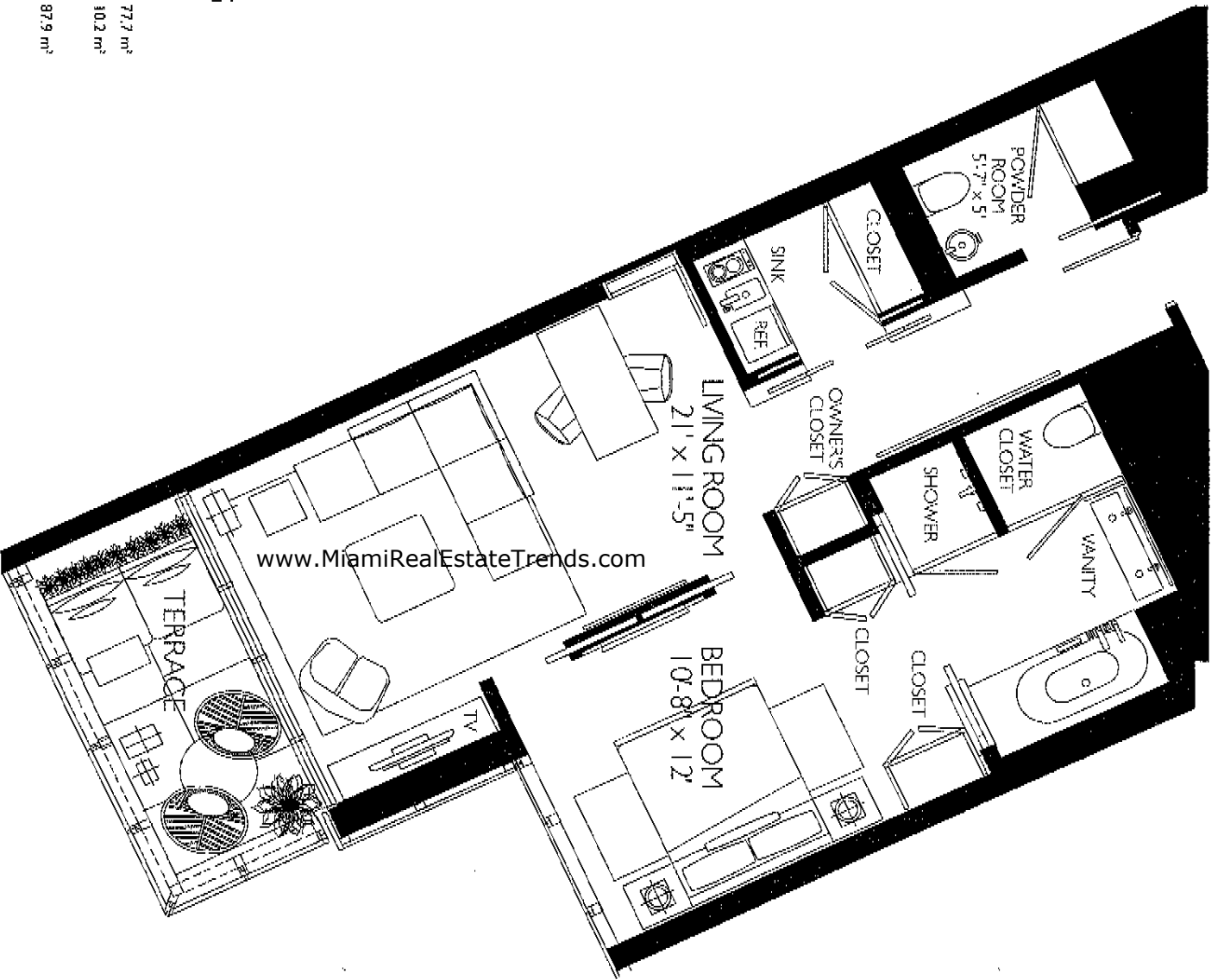
SOUTH BEACH
HOTEL & RESIDENCES

Kindly note: All dimensions are approximate. The developer reserves the right to change the floor plan and dimensions of the unit without notice. All measurements are in feet and inches. All dimensions are approximate. See the actual floor plan for details. All dimensions are approximate. See the actual floor plan for details. All dimensions are approximate. See the actual floor plan for details.

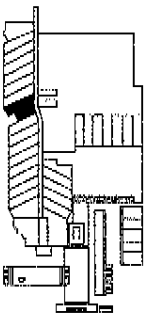
OCEAN RESIDENCE G

1 Bedroom, 1 1/2 Bath

INTERIOR	836 sq. ft.	77.7 m ²
EXTERIOR	110 sq. ft.	10.2 m ²
TOTAL	946 sq. ft.	87.9 m ²



www.MiamiRealEstateTrends.com



KEYPLAN

W

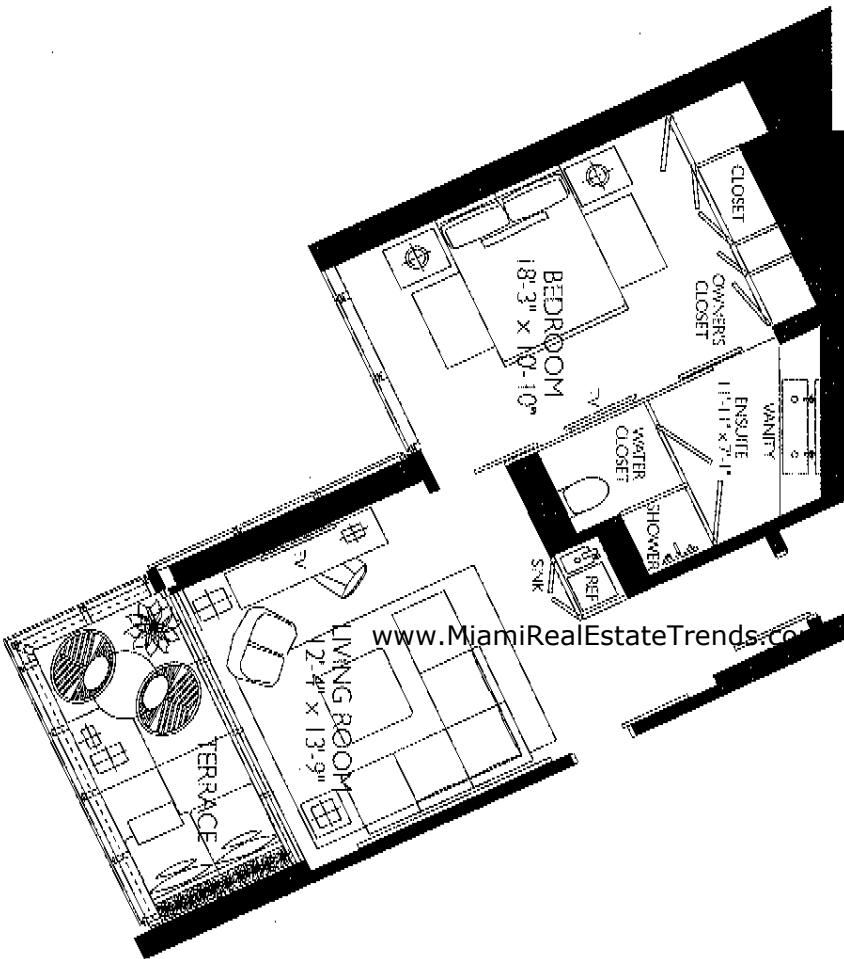
SOUTH BEACH
HOTEL & RESIDENCES

See references at measures to the exterior boundaries of the interior walls and the structure of interior dividing walls and partitions from the dimensions that would be determined by using the description and sketches of the Unit set forth in the Declaration which generally only indicate the general location of the interior structure showing the general walls and partitions. The actual location of the interior walls and partitions may vary from the location shown in the floor plan. The actual location of the interior walls and partitions may vary from the location shown in the floor plan. The actual location of the interior walls and partitions may vary from the location shown in the floor plan.

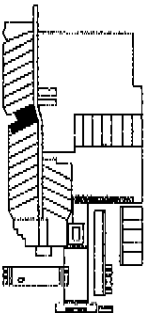
OCEAN RESIDENCE H

1 Bedroom | Bath

INTERIOR	643 sq. ft.	59.7 m ²
EXTERIOR	109 sq. ft.	10.1 m ²
TOTAL	752 sq. ft.	69.8 m ²



www.MiamiRealEstateTrends.com



KEYPLAN



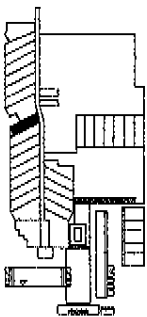
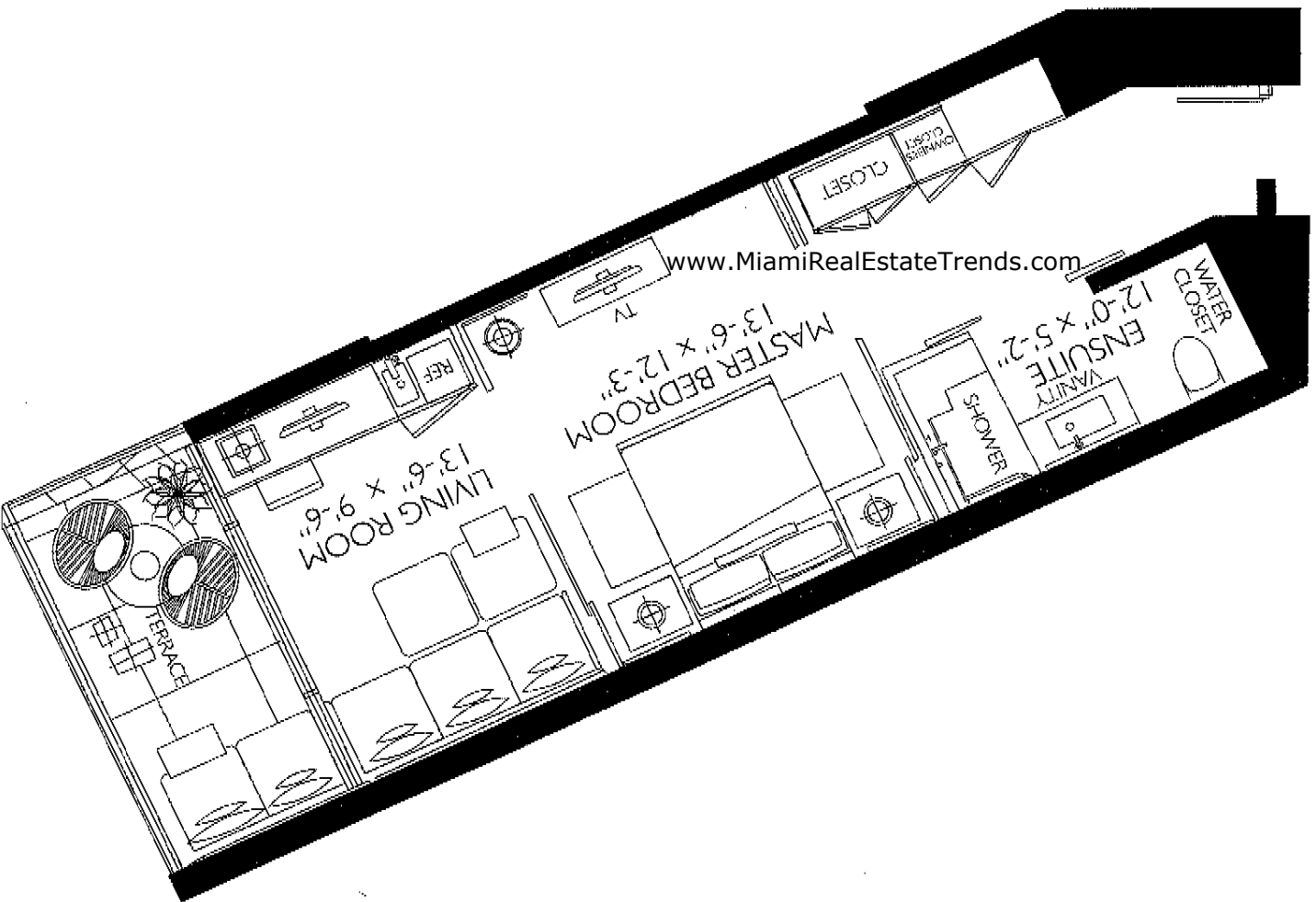
SOUTH BEACH
HOTEL & RESIDENCES

Not a contract. Use made and to the extent of the order or with any other contract or agreement. All dimensions are approximate and subject to change. All floor plans and elevations are approximate and subject to change. All floor plans and elevations are approximate and subject to change. All floor plans and elevations are approximate and subject to change.

Size dimensions are measured to the exterior boundaries of the exterior walls for the entire floor. Dimensions that would be shown by using the description and definition of the Unit set forth in the Declaration shall govern in the event of a discrepancy. All dimensions are approximate and all floor plans are developed from the same subject to change. All dimensions are approximate and all floor plans are developed from the same subject to change.

OCEAN SUITE I

INTERIOR	564 sq. ft.	52.4 m ²
EXTERIOR	104 sq. ft.	9.7 m ²
TOTAL	668 sq. ft.	62.1 m ²



KEY PLAN

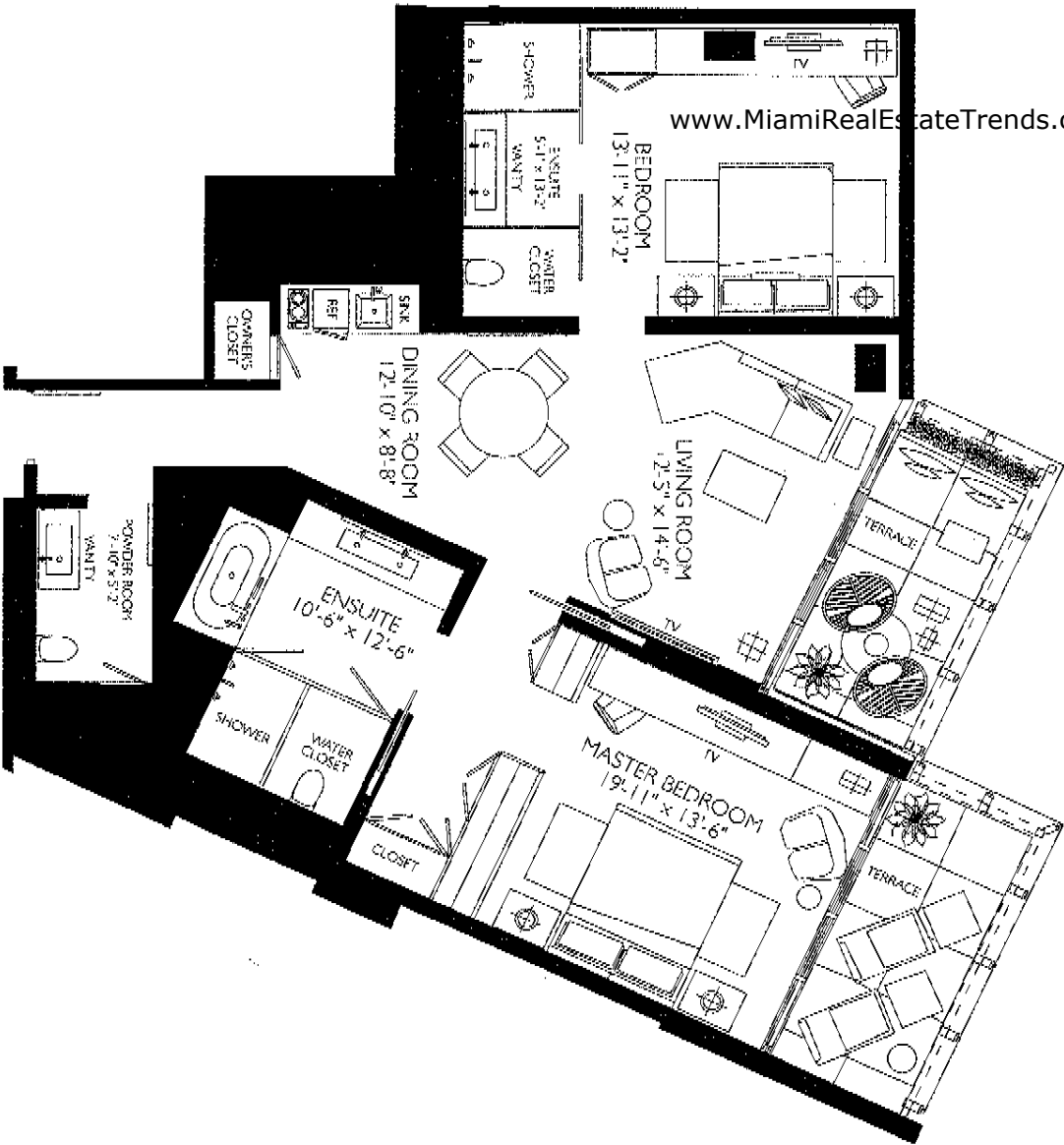


SOUTH BEACH
HOTEL & RESIDENCE

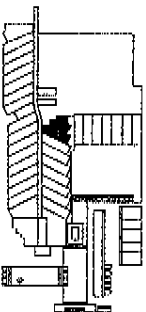
OCEAN RESIDENCE O

2 Bedroom, 2 1/2 Bath

INTERIOR	1287 sq. ft.	119.5 m ²
EXTERIOR	196 sq. ft.	18.2 m ²
TOTAL	1483 sq. ft.	137.7 m ²



www.MiamiRealEstateTrends.com



KEY PLAN



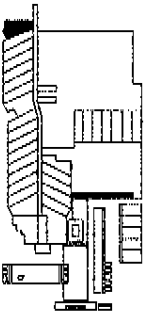
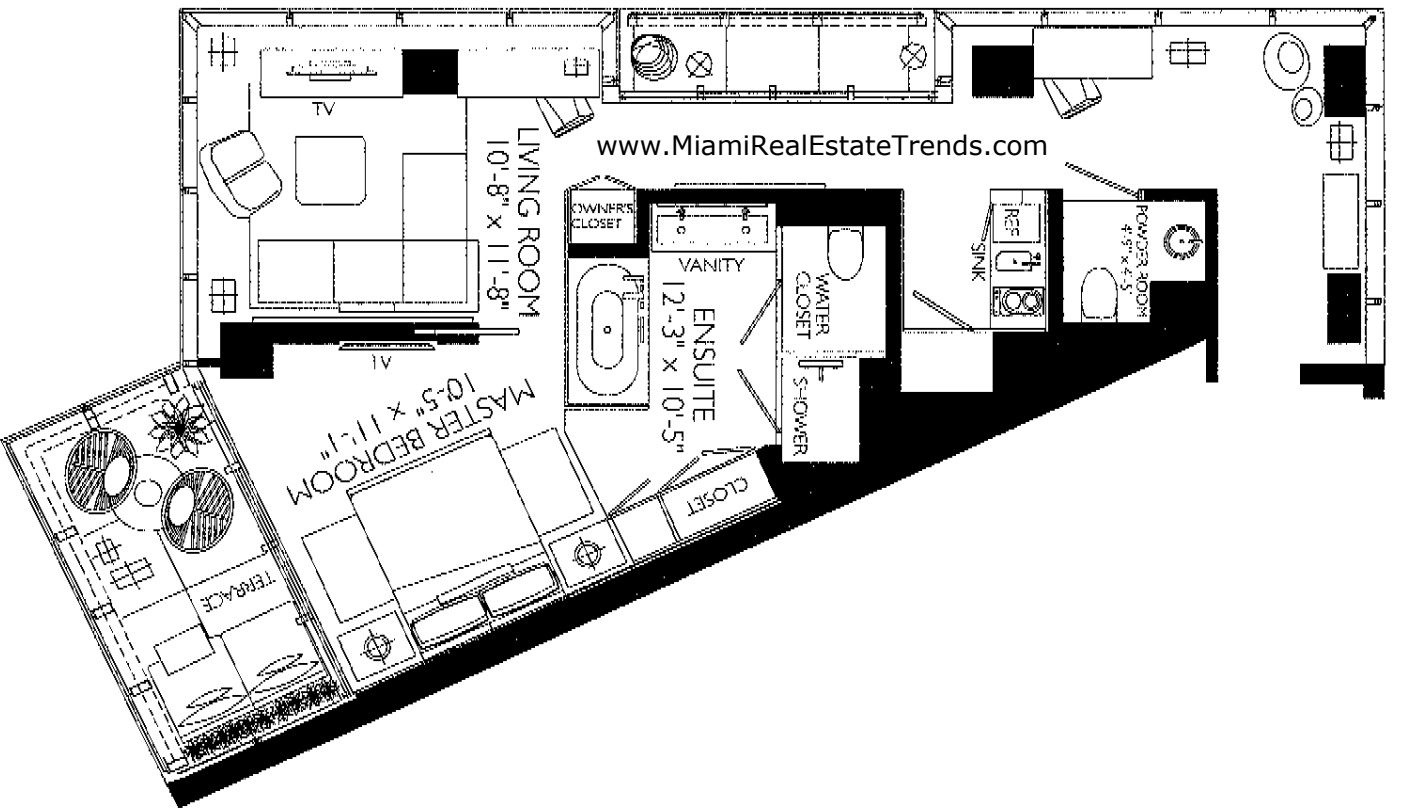
SOUTH BEACH
HOTEL & RESIDENCES

All dimensions are based on the exterior boundaries of the exterior walls and the centerline of the exterior walls and are not to be construed as a guarantee of accuracy. The actual area of the unit may vary from the area shown on this plan. The actual area of the unit may vary from the area shown on this plan. The actual area of the unit may vary from the area shown on this plan.

OCEAN RESIDENCE N

1 Bedroom, 1 1/2 Bath

INTERIOR	850 sq. ft.	79.0 m ²
EXTERIOR	144 sq. ft.	13.3 m ²
TOTAL	994 sq. ft.	92.3 m ²

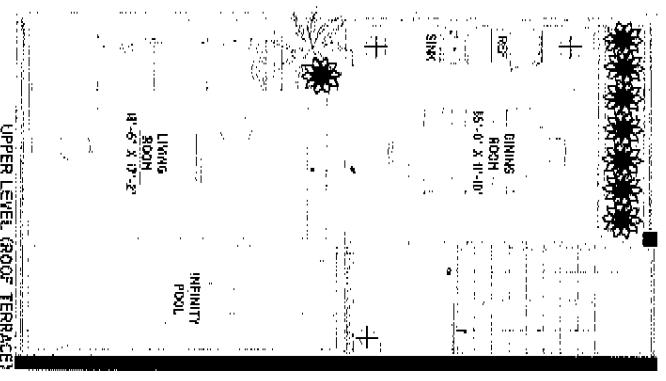
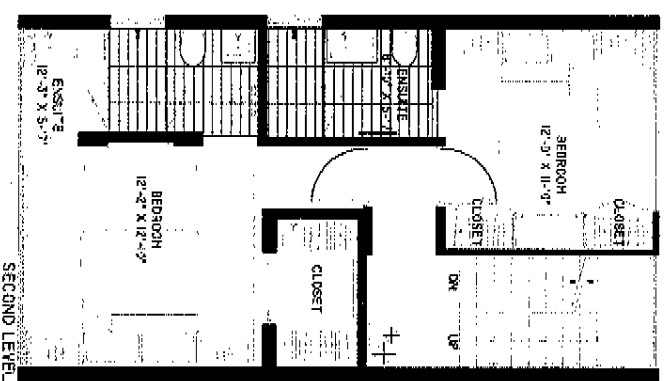
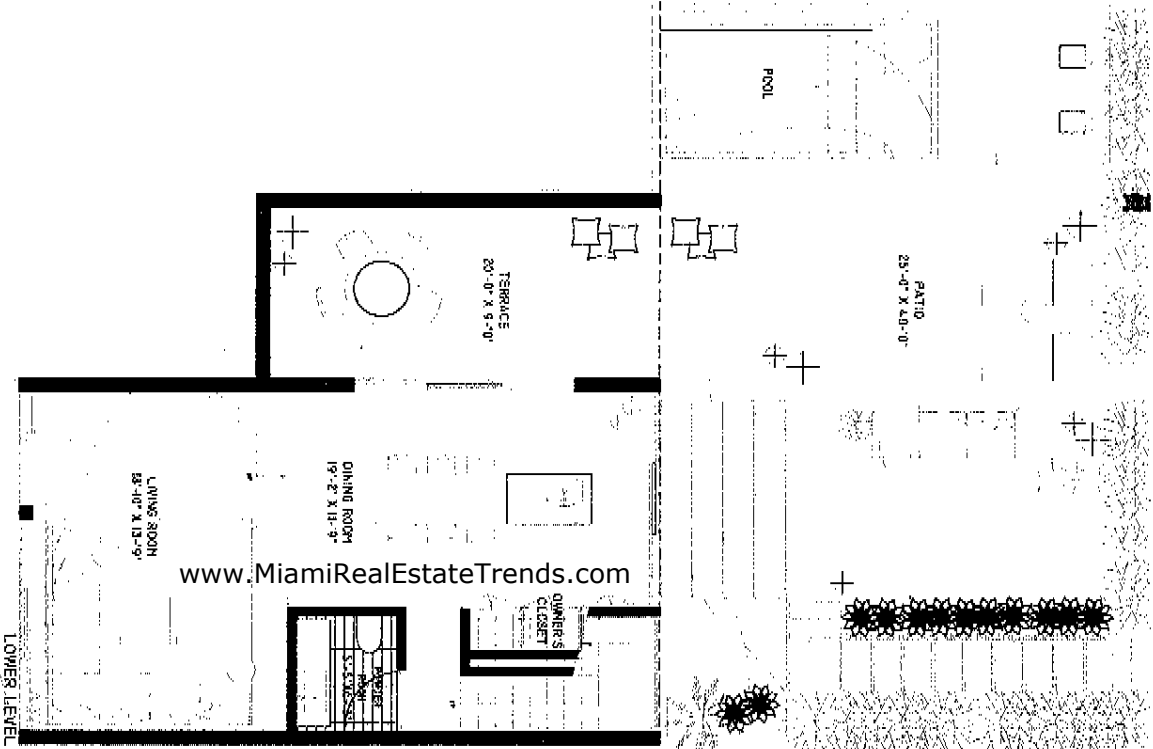


KEYPLAN



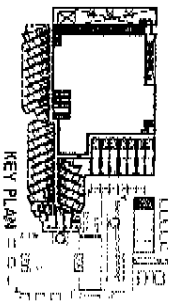
SOUTH BEACH
HOTEL & RESIDENCES

These dimensions are measured to the exterior surfaces of the exterior walls and the centerline of finished openings with some exceptions from the 3/4" to 2" and would be determined by an independent professional surveyor. Actual measurements of rooms could vary from these dimensions. All dimensions are approximate and subject to change.

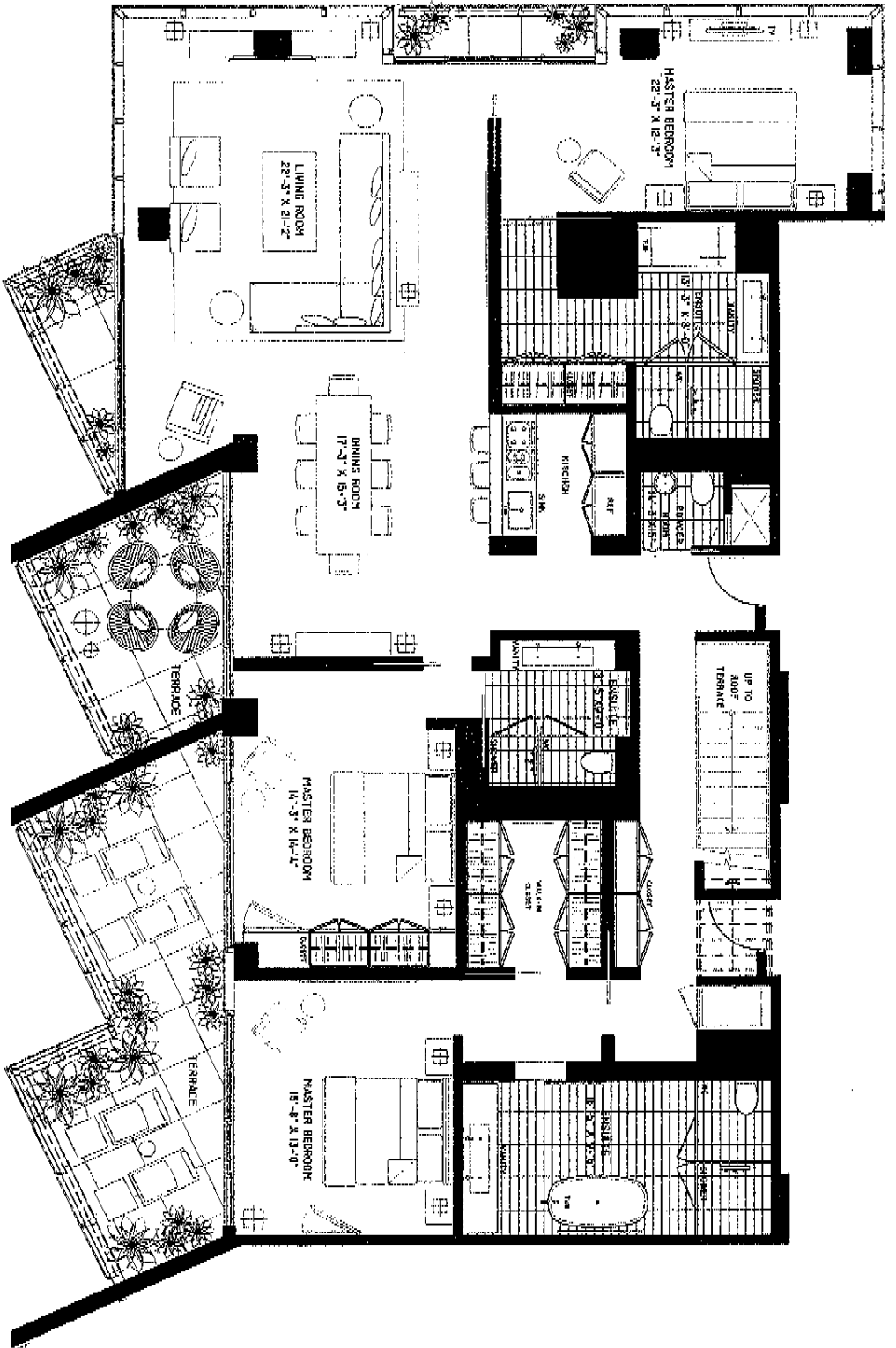


BUNGALOW #1
2 BEDROOM, 2 1/2 BTH

INTERIOR ENCLOSED AREA	123.7	SQ. MT.	1332	SQ. FT.
ROOF TERRACE AREA	61.8	SQ. MT.	666	SQ. FT.
TOTAL RESIDENCE	185.5	SQ. MT.	1998	SQ. FT.

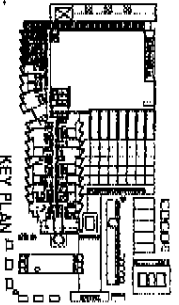


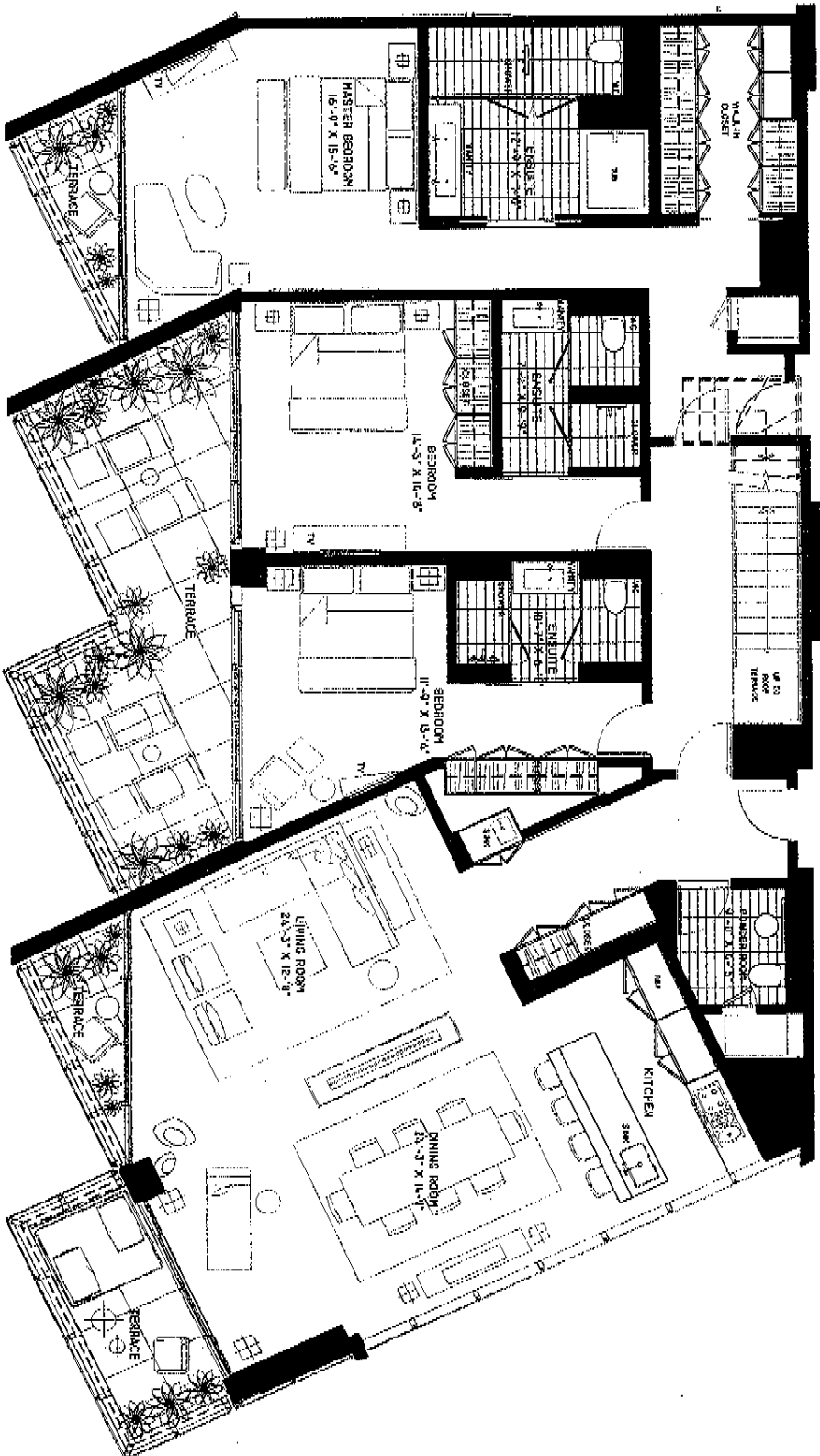
STATED DIMENSIONS ARE MEASURED TO THE EXTERIOR BOUNDARIES OF THE EXTERIOR WALLS AND THE CENTERLINE OF INTERIOR DESIGN WALLS AND A FACT MAY VARY FROM THE DIMENSIONS THAT WOULD BE DETERMINED BY USING THE DESCRIPTION AND SEPARATION OF THE "LIVE" SET POINTS IN THE OCCUPATIONAL CODE. DIMENSIONS ONLY INCLUDES THE INTERIOR CLEARANCE BETWEEN THE PERIMETER WALLS AND ENCLOSURES INCLUDING STRUCTURAL COMPONENTS. ADDITIONAL HEIGHTS OF ROOMS SET POINTS ON JAY'S 5.00 PLAN ARE GENERALLY TAKEN AT THE GREATEST POINTS OF EACH ROOM OR AS IF THE ROOM WERE A PERFECT RECTANGLE, WHICHEVER REGARD FOR ANY CURVES, ACCORDINGLY, THE AREA OF THE ACTUAL ROOM WILL TYPICALLY BE SMALLER THAN THE PRODUCT OBTAINED BY MULTIPLYING THE STATED LENGTH TIMES WIDTH. ALL DIMENSIONS ARE APPROXIMATE, AND ALL FLOOR PLANS AND DEVELOPMENT PLANS ARE SUBJECT TO CHANGE.



STATED DIMENSIONS ARE REQUIRED TO THE EXTERIOR BOUNDARIES OF THE EXTERIOR WALLS AND THE CENTERLINE OF INTERIOR PARTITION WALLS AND IN EACH CASE FROM THE DIMENSIONS THAT WOULD BE DETERMINED BY USING THE DESCRIPTION AND DIMENSION OF THE UNIT SET FORTH IN THE OCCUPATION (WHICH GENERALLY ONLY INCLUDES THE INTERIOR AIRSPACE BETWEEN THE FINISHED WALLS AND EXCLUDES INTERIOR STRUCTURAL COMPONENTS). ADDITIONALLY, MEASUREMENTS OF ROOMS SET FORTH ON ANY FLOOR PLAN ARE GENERALLY TAKEN AT THE GREATEST POINT OF EACH ROOM'S ROOM FOOTPRINT. THE AREA OF THE AREA SUBJECT TO INTERLOCK, WITHOUT REGARD FOR ANY CORNERS, OCCUPANCY, THE AREA OF THE AREA, SHALL BE TYPICALLY BE SMALLER THAN THE PRODUCT OBTAINED BY MULTIPLYING THE STATED LENGTH TIMES WIDTH. ALL DIMENSIONS ARE APPROXIMATE, AND ALL FLOOR PLANS AND DEVELOPMENT PLANS ARE SUBJECT TO CHANGE.

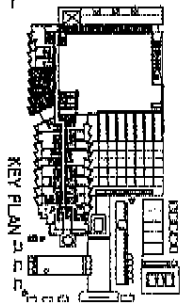
RENTHOUSE 1	
3 BEDROOM, 3 1/2 BTH	
ANTERIOR ENCLOSED AREA	235.6 SQ. MT.
TERRACE AREA	48.0 SQ. MT.
ROOF TERRACE AREA	255.6 SQ. MT.
TOTAL RESIDENCE	539.2 SQ. MT.
	2752 SQ. FT.
	317 SQ. FT.
	2752 SQ. FT.
	6021 SQ. FT.

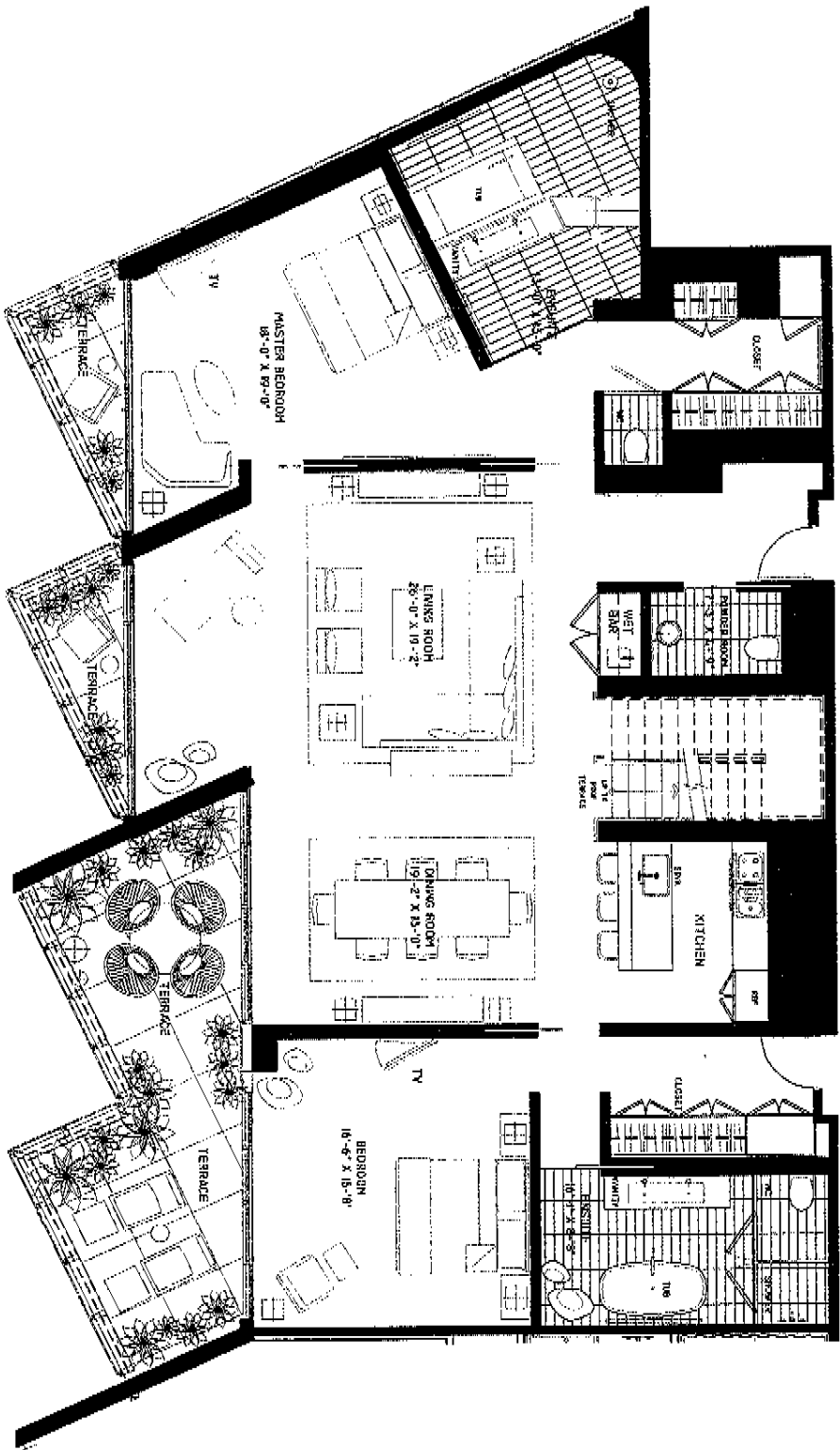




STATED DIMENSIONS ARE REQUIRED TO THE EXTERIOR BOUNDARIES OF THE EXTERIOR WALLS AND THE CENTERLINE OF WINDOW CASING WALLS AND IN FACT VARY FROM THE SPECIFICATIONS THAT WOULD BE INTERPRETED BY JOINING THE CENTERLINE AND JUNCTION OF THE "LINES" SET FORTH IN THE DECLARATION WHICH GENERALLY ONLY INCLUDES THE PERIMETER APARTS BETWEEN THE PERIMETER WALLS AND EXCLUDES WINDOW SPOKES AND COMPONENTS. PARTICULAR MEASUREMENTS OF ROOMS SET FORTH ON ANY FLOOR PLAN ARE GENERALLY TAKEN AT THE CENTERLINE SPACES OF EACH OTHER ROOM. JUST AS THE ROOMS ARE PERFECT RECTANGLES, WITHOUT REGARD FOR ANY CURVES, ACCORDINGLY, THE AREA OF THE ACTUAL ROOM WILL TYPICALLY BE SMALLER THAN THE FIGURES OBTAINED BY MULTIPLYING THE STATED LENGTH TIMES WIDTH. ALL DIMENSIONS ARE APPROXIMATE AND ALL FLOOR, CEILING AND DEVELOPMENT PLANS ARE SUBJECT TO CHANGE.

PENTHOUSE 2			
3 BEDROOM, 3 1/2 BTH			
INTERIOR ENCLOSED AREA	251.0	SG. FT.	2702
TERRACE AREA	44.7	SG. FT.	482
ROOF TERRACE AREA	291.0	SG. FT.	2782
TOTAL RESIDENCE	546.7	SG. FT.	5896



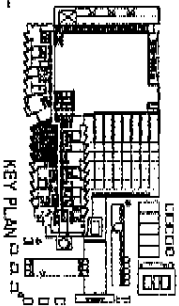


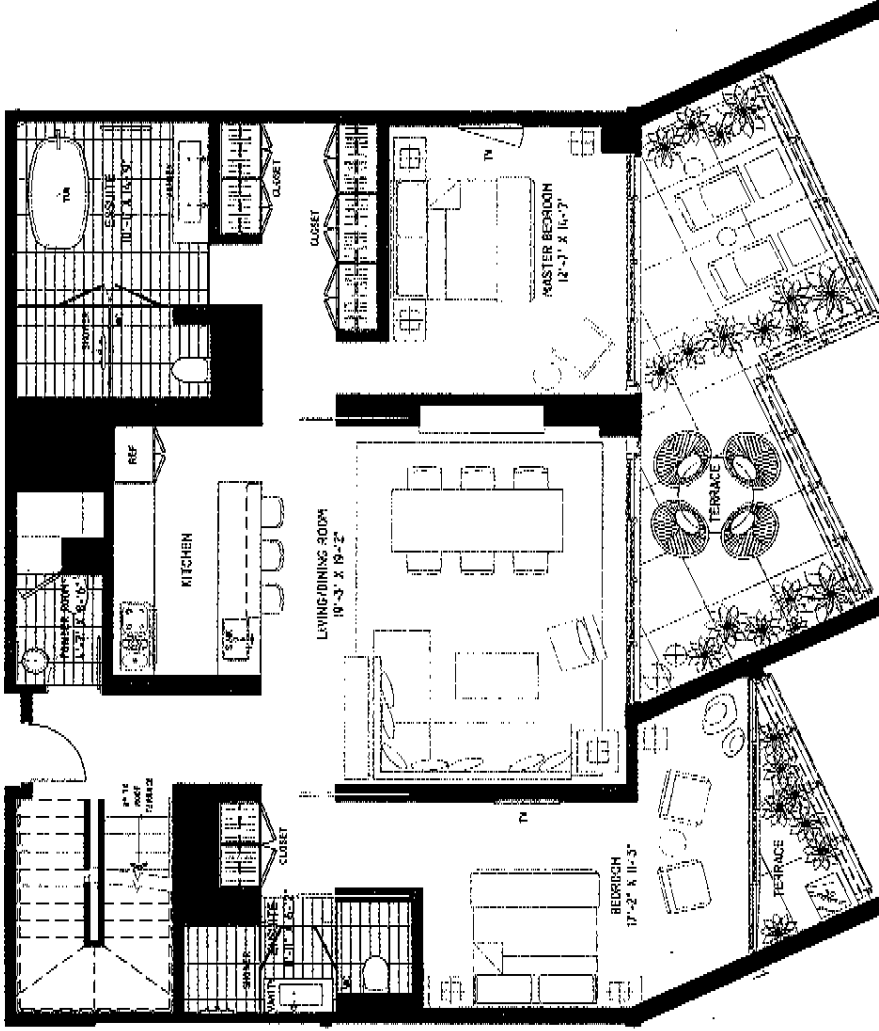
PENTHOUSE 3

2 BEDROOM, 2 1/2 BTH

INTERIOR ENCLOSED AREA	225.5 SQ. FT.	2428 SQ. FT.
TERRACE AREA	36.0 SQ. FT.	388 SQ. FT.
ROOF TERRACE AREA	225.5 SQ. FT.	2428 SQ. FT.
TOTAL RESIDENCE	487.0 SQ. FT.	5244 SQ. FT.

STATED DIMENSIONS ARE MEASURED TO THE EXTERIOR ROOMS OF THE EXTERIOR WALLS AND THE CENTERLINE OF INTERIOR DIVIDING WALLS AND IN FACT MAY VARY FROM THE DIMENSIONS THAT WOULD BE DETERMINED BY USING THE DESCRIPTION AND DEFINITION OF THE UNIT SET FORTH IN THE DECLARATION (WHICH GENERALLY ONLY INCLUDES THE INTERIOR FINISHES BETWEEN THE FINISHED WALLS AND EXCLUDES OTHER STRUCTURAL COMPONENTS, ADDITIONAL MEASUREMENTS OF ROOMS SET FORTH ON ANY FLOOR PLAN ARE GENERALLY TAKEN AT THE GREATEST POINTS OF EACH GIVEN ROOM (AS IF THE ROOM WERE A PERFECT RECTANGLE), WITHOUT REGARD FOR ANY CURVATURE, ACCORDINGLY, THE AREA OF THE ACTUAL ROOM WORK, TYPICALLY BE SMALLER THAN THE PRODUCT OBTAINED BY MULTIPLYING THE STATED LENGTH TIMES WIDTH, ALL DIMENSIONS ARE APPROXIMATE, AND ALL FLOOR PLANS AND DEVELOPMENT PLANS ARE SUBJECT TO CHANGE.

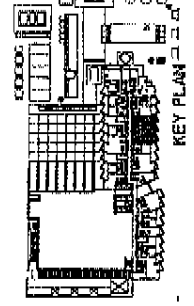


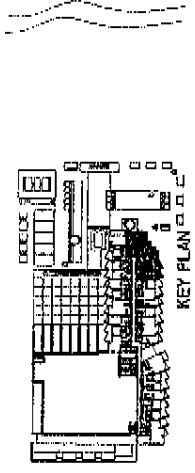
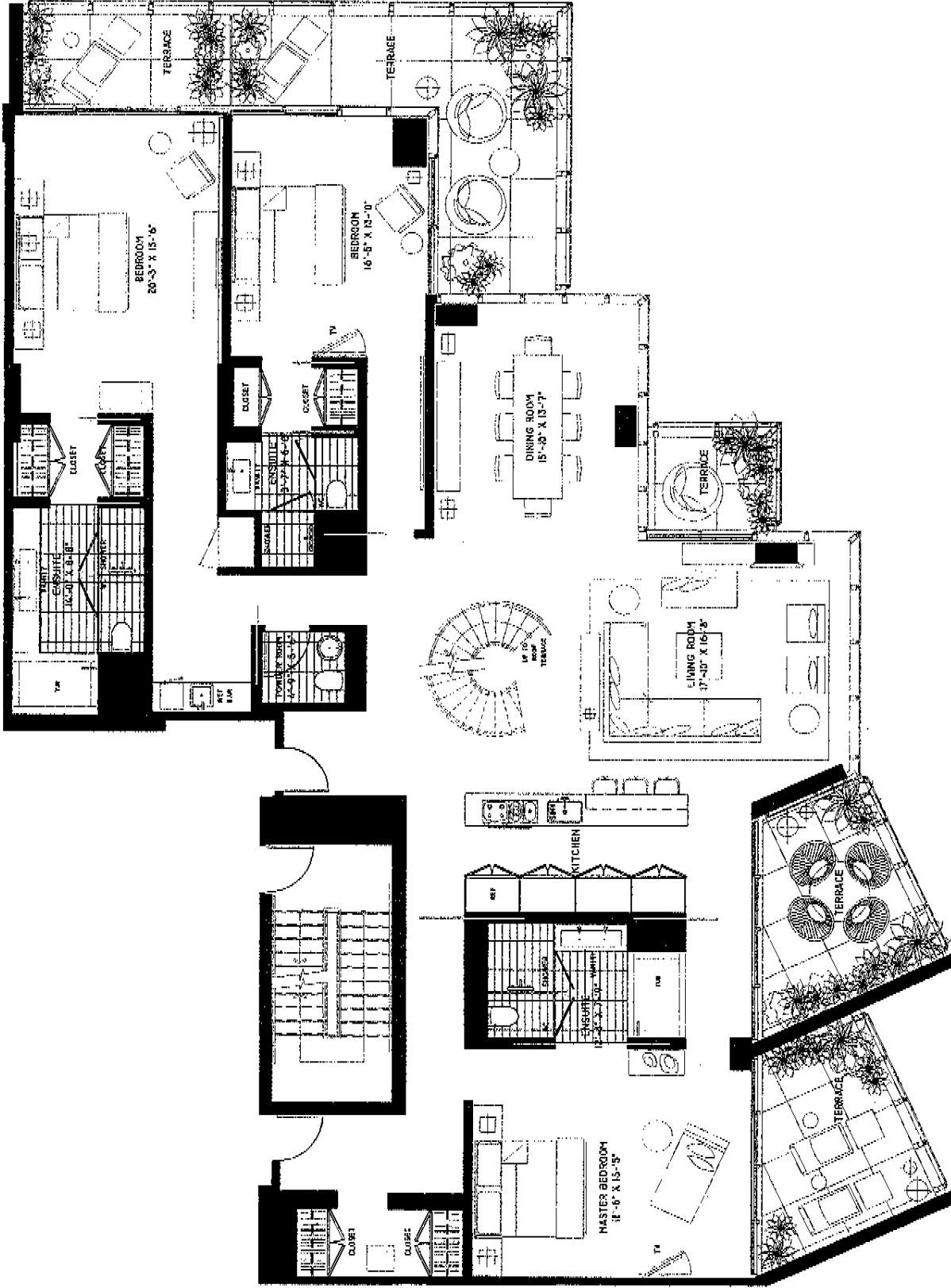


PENTHOUSE 4
2 BEDROOM, 2 1/2 BTH

INTERIOR ENCLOSED AREA	159.3 SQ. MT.	1715 SQ. FT.
TERRACE AREA	31.0 SQ. MT.	334 SQ. FT.
ROOF TERRACE AREA	159.3 SQ. MT.	1715 SQ. FT.
TOTAL RESIDENCE	349.6 SQ. MT.	3764 SQ. FT.

STATED DIMENSIONS ARE MEASURED TO THE EXTERIOR BOUNDARIES OF THE EXTERIOR WALLS AND THE CENTERLINE OF INTERIOR DIVIDING WALLS AND IN FACT VARY FROM THE DIMENSIONS THAT WOULD BE DETERMINED BY USING THE DESCRIPTION AND DEFINITION OF THE "UNIT" SET FORTH IN THE DECLARATION (WHICH USUALLY ONLY INCLUDES THE INTERIOR FINISHES BETWEEN THE FINISHED WALLS AND INCLUDES INTERIOR STRUCTURAL COMPONENTS). ADDITIONALLY, MEASUREMENTS OF ROOMS SET FORTH ON ANY FLOOR PLAN ARE GENERALLY TAKEN AT THE GREATEST POINTS OF EACH ROOM (AS IF THE ROOM WERE A PERFECT RECTANGLE), WITHOUT REGARD FOR ANY CUTOUTS. ACCORDINGLY, THE AREA OF THE ACTUAL ROOM WILL TYPICALLY BE SMALLER THAN THE PRODUCT OBTAINED BY MULTIPLYING THE STATED LENGTH TIMES WIDTH. ALL DIMENSIONS ARE APPROXIMATE, AND ALL FLOOR PLANS AND DEVELOPMENT PLANS ARE SUBJECT TO CHANGE.

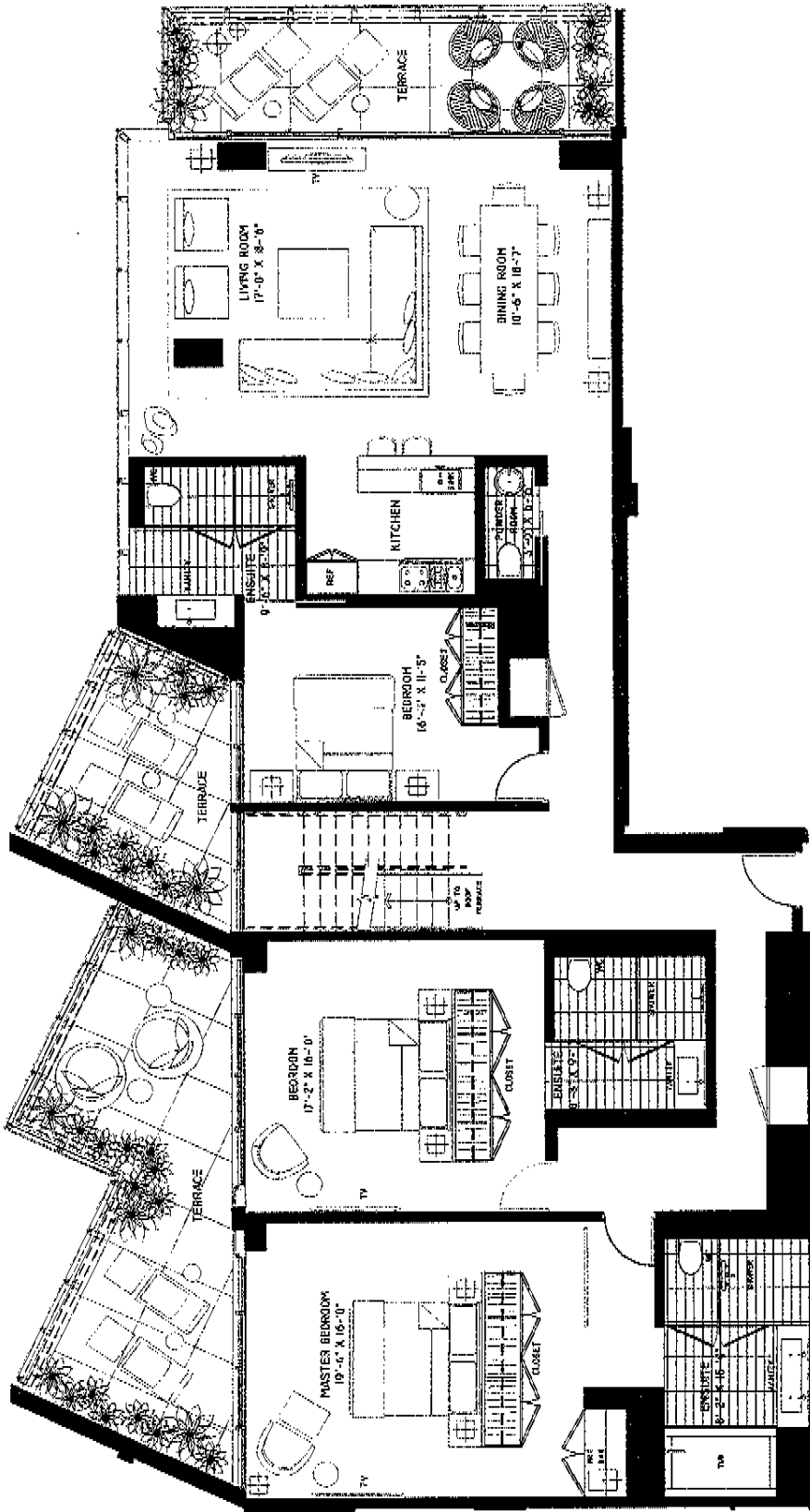




PENTHOUSE 5
3 BEDROOM, 3 1/2 BTH

INTERIOR ENCLOSED AREA	268.3 SQ. MT.	2888 SQ. FT.
TERRACE AREA	64.1 SQ. MT.	690 SQ. FT.
ROOF TERRACE AREA	268.3 SQ. MT.	2888 SQ. FT.
TOTAL RESIDENCE	600.7 SQ. MT.	6466 SQ. FT.

STATED DIMENSIONS ARE MEASURED TO THE EXTERIOR BOUNDARIES OF THE EXTERIOR WALLS AND THE CENTERLINE OF INTERIOR PARTITION WALLS. IN FACT MANY FROM THE DIMENSIONS THAT WOULD BE PROVIDED BY USING THE DESCRIPTION AND REFERENCE TO THE "UNIT" SET FORTH IN THE DECLARATION (WHICH GENERALLY ONLY INCLUDES THE INTERIOR ANGLES BETWEEN THE PERIMETER WALLS AND EXTERIOR WINDOW STRUCTURAL COMPONENTS). APPROPRIATELY, MEASUREMENTS OF ROOMS SET FORTH ON ANY FLOOR PLAN ARE GENERALLY TAKEN AT THE ORIENTED POINTS OF EACH ROOM FROM (AS IF THE ROOM WERE A PERFECT RECTANGLE). WITHOUT REGARD FOR ANY CORNERS. ACCORDINGLY, THE AREA OF THE ACTUAL ROOMS WILL TYPICALLY BE SMALLER THAN THE PRODUCT OBTAINED BY MULTIPLYING THE STATED LENGTH TIMES WIDTH. ALL DIMENSIONS ARE APPROXIMATE, AND ALL FLOOR PLANS AND DEVELOPMENT PLANS ARE SUBJECT TO CHANGE.

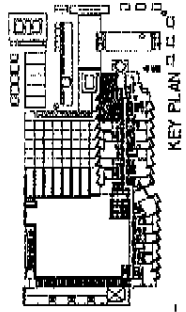


PENTHOUSE 6

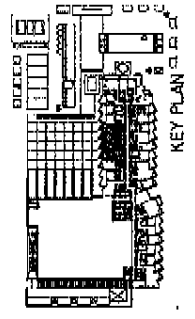
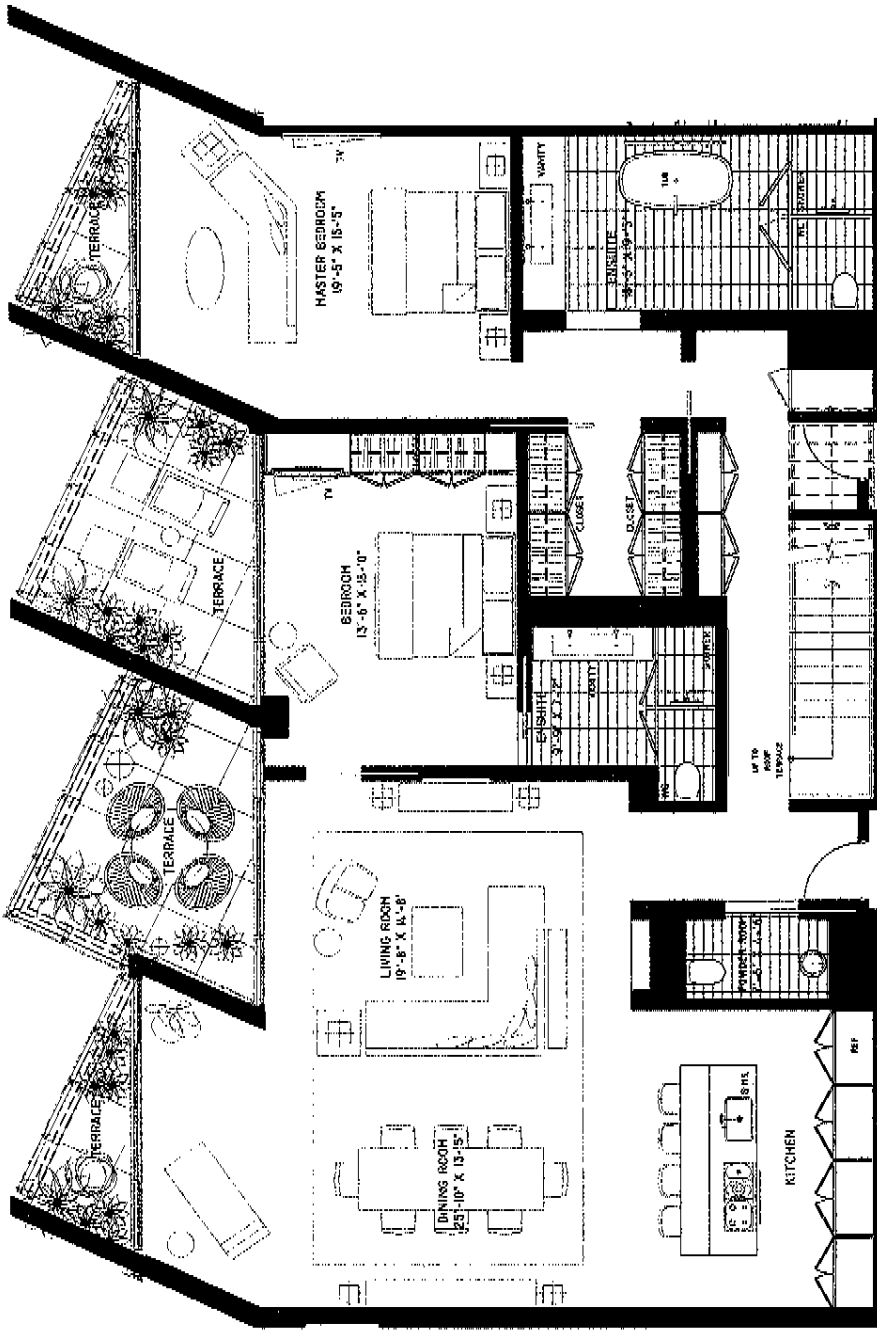
3 BEDROOM, 3 1/2 BTH

INTERIOR ENCLOSED AREA	220.3 SQ. MT.	2372 SQ. FT.
TERRACE AREA	57.6 SQ. MT.	623 SQ. FT.
ROOF TERRACE AREA	220.3 SQ. MT.	2372 SQ. FT.
TOTAL RESIDENCE	498.4 SQ. MT.	5367 SQ. FT.

STATED DIMENSIONS ARE MEASURED TO THE EXTERIOR BOUNDARIES OF THE EXTERIOR WALLS AND 1/2" CENTERLINE OF INTERIOR PARTITION WALLS AND IN FACT VARY FROM THE DIMENSIONS THAT WOULD BE DETERMINED BY USING THE OBSERVATION AND DIMENSION OF THE "UNIT" SET FORTH IN THE DECLARATION (WHICH GENERALLY ONLY INCLUDES THE INTERIOR SURFACE BETWEEN THE PERMITTED WALLS AND EXCLUDES INTERIOR STRUCTURAL COMPONENTS). ADDITIONALLY, MEASUREMENTS OF ROOMS SET FORTH ON ANY FLOOR PLAN ARE GENERALLY TAKEN AT THE GREATEST SOURCE OF EACH ROOM (AS IF THE ROOM WERE A PERFECT RECTANGLE), WITHOUT REGARD FOR ANY CURVED, ACCORDINGLY, THE AREA OF THE ACTUAL ROOM WILL TYPICALLY BE SMALLER THAN THE PRODUCT OBTAINED BY MULTIPLYING THE STATED LENGTH TIMES WIDTH. ALL DIMENSIONS ARE APPROXIMATE, AND ALL FLOOR PLANS AND DEVELOPMENT PLANS ARE SUBJECT TO CHANGE.



KEY PLAN

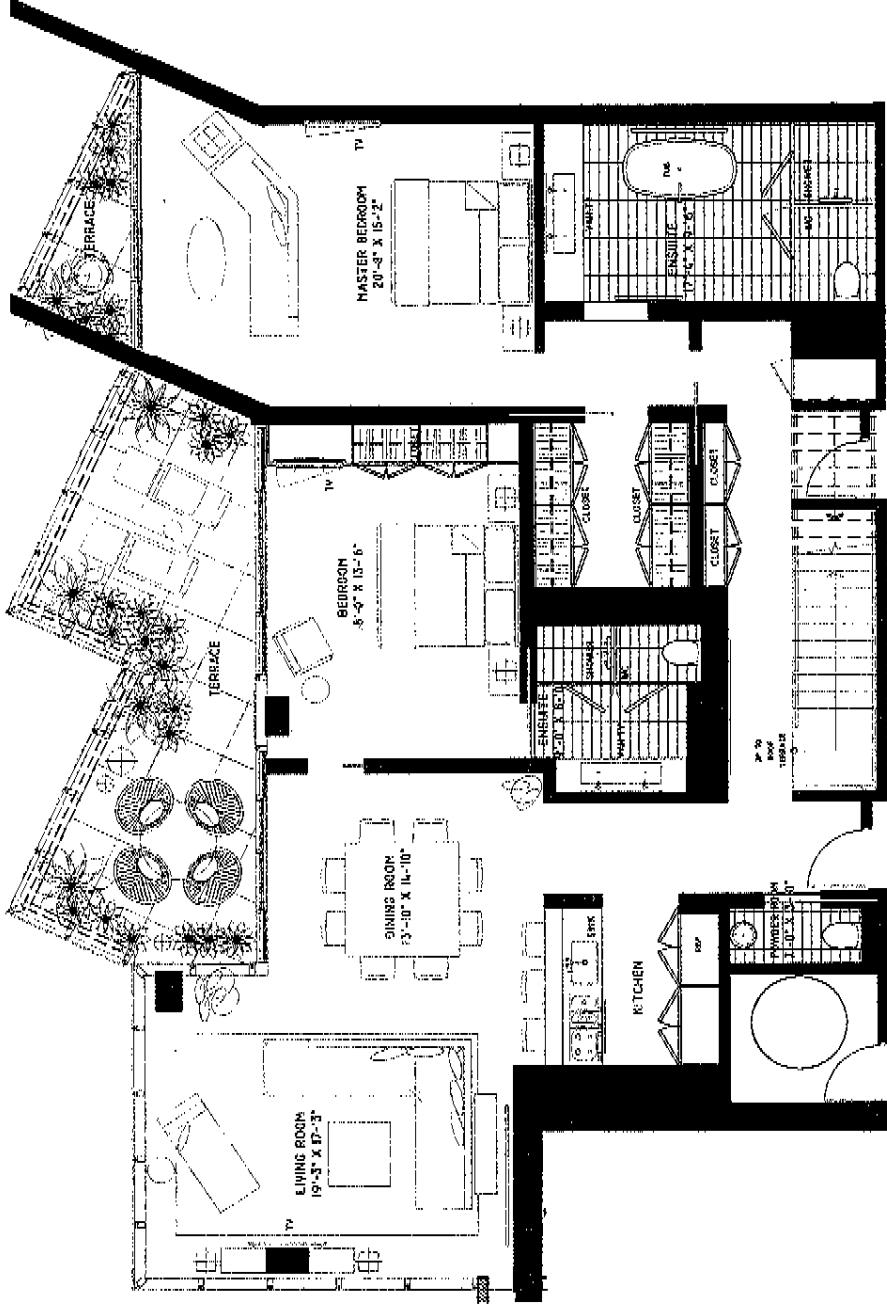


PENTHOUSE 7

2 BEDROOM, 2 1/2 BTH

INTERIOR ENCLOSED AREA	215.9 SQ. FT.	2324 SQ. FT.
TERRACE AREA	36.1 SQ. FT.	369 SQ. FT.
ROOF TERRACE AREA	215.9 SQ. FT.	2324 SQ. FT.
TOTAL RESIDENCE	467.9 SQ. FT.	5426 SQ. FT.

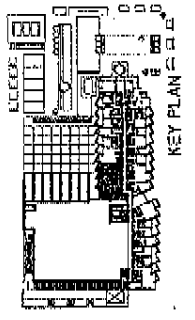
STATES DIMENSIONS ARE MEASURED TO THE EXTERIOR BOUNDARIES OF THE EXTERIOR WALLS AND THE CENTERLINE OF INTERIOR PARTITION WALLS AND TO FACT VARY FROM THE DIMENSIONS THAT WOULD BE DETERMINED BY USING THE DESCRIPTION AND DEFINITION OF THE "UNIT" SET FORTH IN THE DECLARATION (WHICH GENERALLY ONLY INCLUDES THE INTERIOR ANGLE BETWEEN THE PERIMETER WALLS AND EXCLUDES INTERIOR STRUCTURAL COMPONENTS). ADDITIONALLY, MEASUREMENTS OF ROOMS SET FORTH ON ANY FLOOR PLAN ARE GENERALLY TAKEN AT THE GREATEST POINTS OF EACH ROOM (AS IF THE ROOM WERE A PERFECT RECTANGLE), WITHOUT REGARD FOR ANY CUTOUTS. ACCORDINGLY, THE AREA OF THE ACTUAL ROOM WILL TYPICALLY BE SMALLER THAN THE PRODUCT OBTAINED BY MULTIPLYING THE STATED LENGTH TIMES WIDTH. ALL DIMENSIONS ARE APPROXIMATE, AND ALL FLOOR PLANS AND DEVELOPMENT PLANS ARE SUBJECT TO CHANGE.

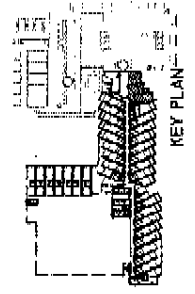
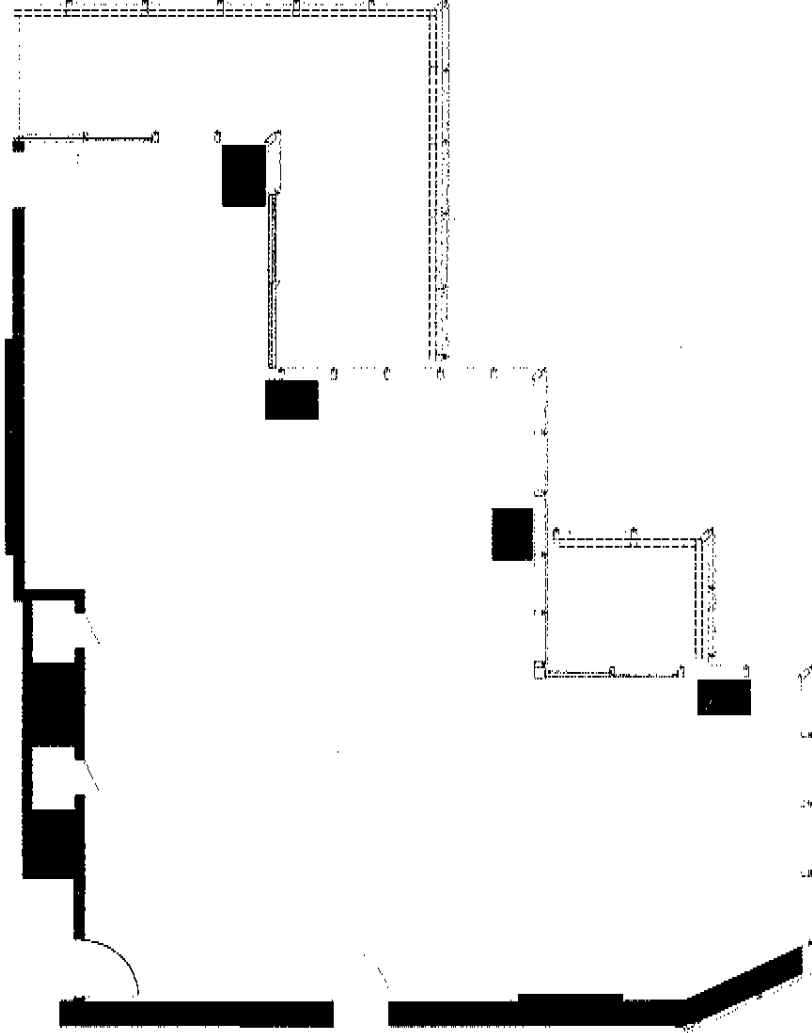


PENTHOUSE 8
2 BEDROOM, 2 1/2 BTH

INTERIOR ENCLOSED AREA	191.0	SQ. FT.	2056	SQ. FT.
TERRACE AREA	32.9	SQ. FT.	355	SQ. FT.
ROOF TERRACE AREA	191.0	SQ. FT.	2056	SQ. FT.
TOTAL RESIDENCE	414.9	SQ. FT.	4467	SQ. FT.

STATED DIMENSIONS ARE MEASURED TO THE EXTERIOR BOUNDARIES OF THE EXTERIOR WALLS AND THE CENTERLINE OF INTERIOR PARTITION WALLS AND IN FACT VARY FROM THE DIMENSIONS THAT WOULD BE DETERMINED BY USING THE DESCRIPTION AND DEFINITION OF THE "LAST SET FORTH IN THE DECLARATION (WHICH GENERALLY ONLY INCLUDES THE INTERIOR AIRSPACE BETWEEN THE PERIMETER WALLS AND EXCLUDES INTERIOR STRUCTURAL COMPONENTS). ADDITIONALLY, MEASUREMENTS OF ROOMS SET FORTH ON ANY FLOOR PLAN ARE GENERALLY TAKEN AT THE GREATEST POINTS OF EACH ROOM (AS IF THE ROOM WERE A PERFECT RECTANGLE). MEASUREMENTS FOR ANY CURVED, ACCORDIONALLY, THE AREA OF THE ACTUAL ROOM WILL TYPICALLY BE SMALLER THAN THE PRODUCT OBTAINED BY MULTIPLYING THE STATED LENGTH TIMES WIDTH. ALL DIMENSIONS ARE APPROXIMATE, AND ALL FLOOR PLANS AND SCHEDULED PLANS ARE SUBJECT TO CHANGE.

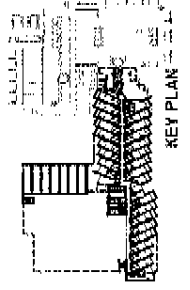
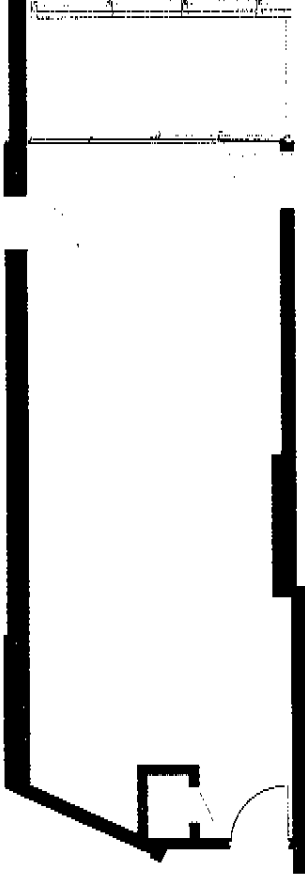




OCEAN RESIDENCE K

INTERIOR ENCLOSED AREA	126.2	SQ. FT.	1358	SQ. FT.
TERRACE AREA	31.4	SQ. FT.	338	SQ. FT.
TOTAL RESIDENCE	157.6	SQ. FT.	1696	SQ. FT.

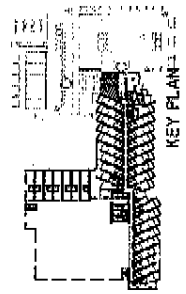
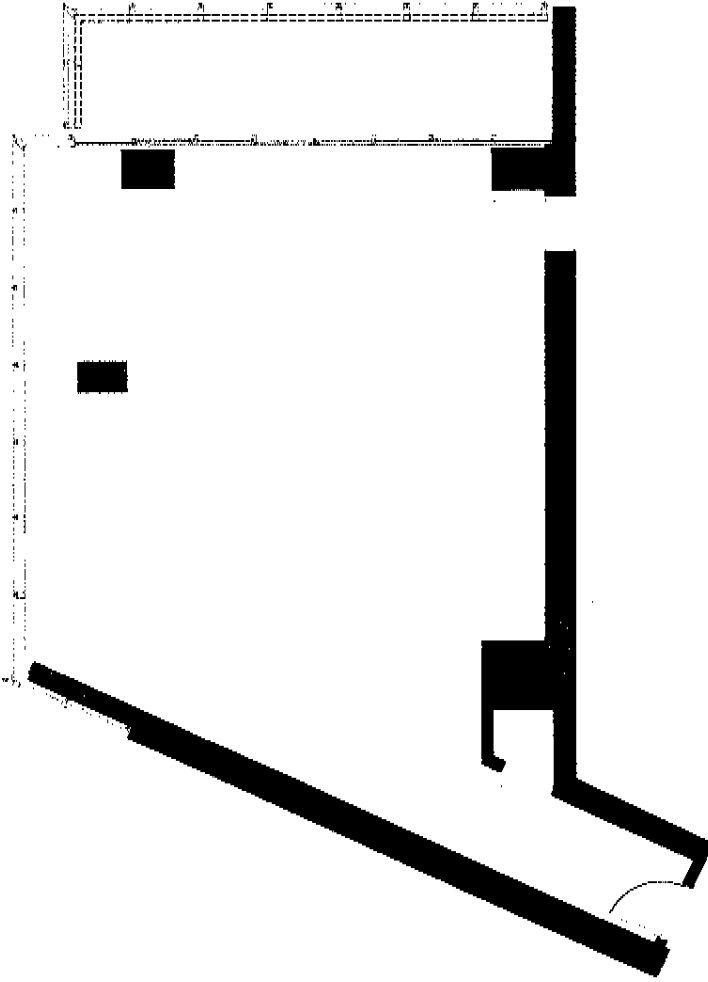
STATED DIMENSIONS ARE DEASURED TO THE EXTERIOR BOUNDARIES OF THE EXTERIOR WALLS AND THE CENTERLINE OF INTERIOR DIVIDING WALLS AND IN FACT VARY FROM THE DIMENSIONS THAT WOULD BE DETERMINED BY USING THE DESCRIPTION AND DEFINITION OF THE "UNIT" SET FORTH IN THE DECLARATION (WHICH GENERALLY ONLY INCLUDES THE INTERIOR AIRSPACE BETWEEN THE PERIMETER WALLS AND EXCLUDES INTERIOR STRUCTURAL COMPONENTS). ADDITIONAL MEASUREMENTS OF ROOMS SET FORTH ON ANY FLOOR PLAN ARE GENERALLY TAKEN AT THE FURTHEST POINTS OF EACH ROOM (AS IF THE ROOM WERE A PERFECT RECTANGLE), WITHOUT REGARD FOR ANY CURVES. ACCORDINGLY, THE AREA OF THE ACTUAL ROOM WILL TYPICALLY BE SMALLER THAN THE PRODUCT OBTAINED BY MULTIPLYING THE STATED LENGTH TIMES WIDTH. ALL DIMENSIONS ARE APPROPRIATE, AND ALL FLOOR PLANS AND DEVELOPMENT PLANS ARE SUBJECT TO CHANGE.



OCEAN RESIDENCE 1

INTERIOR ENCLOSED AREA	50.6	SQ. MT.	545	SQ. FT.
TERRACE AREA	9.5	SQ. MT.	102	SQ. FT.
TOTAL RESIDENCE	60.1	SQ. MT.	647	SQ. FT.

STATED DIMENSIONS ARE MEASURED TO THE EXTERIOR FINISHES OF THE EXTERIOR WALLS AND THE CENTERLINE OF INTERIOR PARTITION WALLS AND IN FACT VARY FROM THE DIMENSIONS THAT WOULD BE DETERMINED BY USING THE DESCRIPTION AND DEFINITION OF THE "UNIT" SET FORTH IN THE DECLARATION (WHICH GENERALLY ONLY INCLUDES THE INTERIOR FINISHES BETWEEN THE PERIMETER WALLS AND EXCLUDES INTERIOR STRUCTURAL COMPONENTS). ADDITIONALLY, MEASUREMENTS OF ROOMS SET FORTH ON ANY FLOOR PLAN ARE GENERALLY TAKEN AT THE GREATEST POINTS OF EACH GIVEN ROOM (AS IF THE ROOM WERE A PERFECT RECTANGLE), WITHOUT REGARD FOR ANY SLOTTING, ACCORDINGLY, THE AREA OF THE ACTUAL ROOM WILL TYPICALLY BE SMALLER THAN THE PRODUCT OBTAINED BY MULTIPLYING THE STATED LENGTH TIMES WIDTH. ALL DIMENSIONS ARE APPROXIMATE, AND ALL FLOOR PLANS AND DEVELOPMENT PLANS ARE SUBJECT TO CHANGE.



OCEAN RESIDENCE M

INTERIOR ENCLOSED AREA	97.2	SQ. MT.	104.5	SQ. FT.
TERRACE AREA	17.3	SQ. MT.	187	SQ. FT.
TOTAL RESIDENCE	114.5	SQ. MT.	1233	SQ. FT.

STATED DIMENSIONS ARE MEASURED TO THE EXTERIOR BOUNDARIES OF THE EXTERIOR WALLS AND THE CENTERLINE OF INTERIOR PARTING WALLS AND IN FACT VARY FROM THE DIMENSIONS THAT WOULD BE DETERMINED BY USING THE DESCRIPTION AND DEFINITION OF THE "UNIT" SET FORTH IN THE DECLARATION (WHICH GENERALLY ONLY INCLUDES THE INTERIOR AIRSPACE BETWEEN THE PERIMETER WALLS AND EXCLUDES INTERIOR STRUCTURAL COMPONENTS). ADDITIONALLY, MEASUREMENTS OF ROOMS SET FORTH ON ANY FLOOR PLAN ARE GENERALLY TAKEN AT THE GREATEST POINTS OF EACH GIVEN ROOM (AS IF THE ROOM WERE A PERFECT RECTANGLE), WITHOUT REGARD FOR ANY CUTOUTS. ACCORDINGLY, THE AREA OF THE ACTUAL ROOM WILL TYPICALLY BE SMALLER THAN THE PRODUCT OBTAINED BY MULTIPLYING THE STATED DIMENSIONS. ALL DIMENSIONS ARE APPROXIMATE AND ALL FLOOR PLANS AND DEVELOPMENT PLANS ARE SUBJECT TO CHANGE.